

record 7-26-21

# Town of Perinton Special Use Permit Renewal



High Acres Landfill & Recycling Center

July 26, 2021

Jeff Richardson | Waste Management of NY, LLC  
Tom Hasek | Waste Management of NY, LLC  
David Cross | Waste Management of NY, LLC  
Nicole Simonetti | Waste Management of NY, LLC  
Luann Meyer | Barton & Loguidice, Inc.  
Steven Wilsey | GHD Services, Inc.  
Joseph D. Picciotti | Harris Beach PLLC

**Barton  
& Loguidice**



Record 7-26-21

## Special Use Permit Renewal

- ▶ Town of Perinton's Zoning Regulations Section 208-21
- ▶ May 27, 2021 Submission to ZBA
- ▶ Application includes:
  - ▶ Required Forms
  - ▶ Site Overview
  - ▶ Operations Update
  - ▶ Fill Progression History
  - ▶ Volume History
  - ▶ Permit History



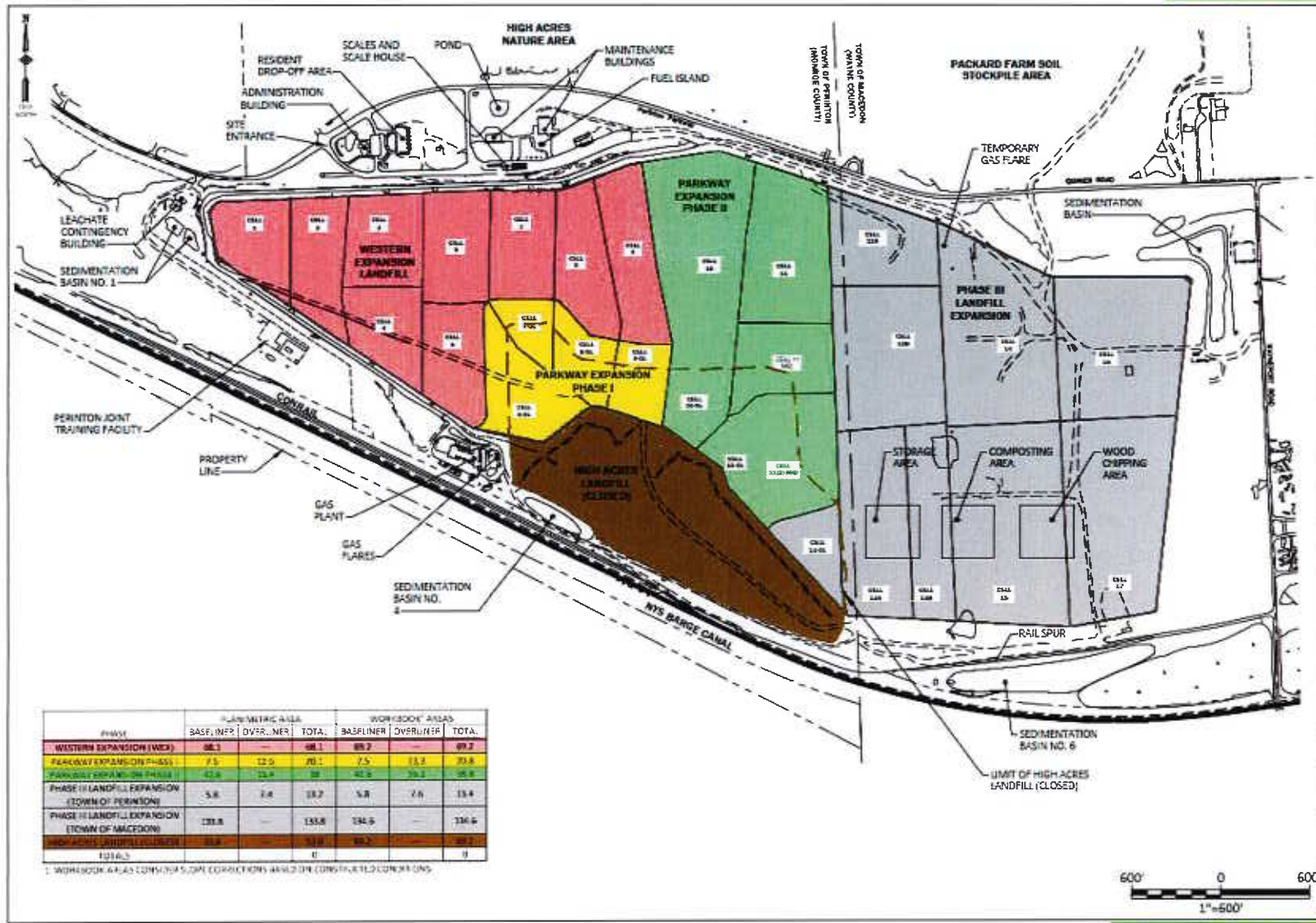
Record 7-26-21

## High Acres Landfill & Recycling Center Complex

- ▶ 360-acre non-hazardous solid waste facility
- ▶ NYSDEC Permitted
- ▶ Residential Drop-off
- ▶ Organics Processing
  - ▶ Yard Waste, Brush & Food Scraps
- ▶ 9.6-MW Renewable Energy Facility
- ▶ First Responder Training
- ▶ 250-acre nature area
  - ▶ Outdoor classroom (RIT)
- ▶ Sports Complex



Record 7-26-21



PHASE	PLANIMETRIC AREA			WORKBOOK AREAS		
	BASE, INF.	OVER, NET	TOTAL	BASFLINER	OVER/NET	TOTAL
WESTERN EXPANSION (WEX)	66.1	—	66.1	66.2	—	66.2
PARKWAY EXPANSION PHASE I	7.5	12.5	20.0	7.5	13.2	20.7
PARKWAY EXPANSION PHASE II	12.8	13.8	26.6	12.5	13.2	25.7
PHASE III LANDFILL EXPANSION (TOWN OF PERINTON)	5.8	2.8	8.6	5.8	2.8	8.6
PHASE III LANDFILL EXPANSION (TOWN OF MACEDON)	131.8	—	131.8	134.5	—	134.5
WORKBOOK AREAS CORRECTIONS	—	—	—	—	—	—
TOTALS	—	—	0	—	—	0

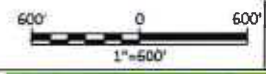
1: WORKBOOK AREAS CORRECTIONS SHOULD BE CORRECTED TO CORRECT LINES

WASTE MANAGEMENT  
HIGH ACRES LANDFILL  
SITE PLAN

**B & L**  
643 Electronics Parkway  
Lewiston, NY  
13091

**Barton & Loguidice, D.P.C.**

Date: MAY 2021  
Scale: 1" = 600'  
Figure Number: 1  
Project Number: 1242.015.021



record 7-26-21

## Special Use Permit History

Special Use Permit History			
High Acres Landfill Area	SUP Executed	Renewal Dates	Expiration Date
Closed Landfill	N/A	N/A	N/A
Western Expansion (WEX)	6/6/2001	3/24/2006, 6/30/2011 8/22/2016	August 22, 2021
Parkway Expansion Phase I	6/6/2001	3/24/2006, 6/30/2011, 8/22/2016	All landfills areas (WEX, Phase I, II and III) were combined as one Special Use Permit in 2008.
Parkway Expansion Phase II	1/27/2003	3/24/2006, 6/30/2011	
Parkway Expansion Phase III	3/24/2008	6/30/2011, 8/22/2016	



record 7-26-21

Thank you.

Jeff Richardson | Sr. District Manager | [jrichard3@wm.com](mailto:jrichard3@wm.com)



<https://vimeo.com/366548158/7e23050700>



<https://highacreslandfill.wm.com/>

RECEIVED

JUL 22 2021

July 21, 2021

TOWN OF PERINTON

Ms. Robin Ezell  
Chairperson, Zoning Board of Appeals  
Town of Perinton  
1350 Turk Hill Road  
Fairport, NY 14450

Re: High Acres Landfill & Recycling Center  
Special Use Permit Renewal Application Clarification

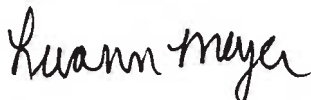
Dear Chairperson Ezell:

Waste Management of New York, LLC (WM) previously submitted the Special Use Permit Renewal Application for the High Acres Landfill & Recycling Center (HALRC) on May 27, 2021. Included in the application was a draft of a Full Environmental Assessment Form (EAF) including parts of 1-3, which was submitted for informational purposes only.

WM as the applicant acknowledges that the status or category of the application under applicable law, including the New York State Environmental Quality Review Act (SEQRA) is the responsibility of the Town and not the applicant. It is our understanding that prior permit renewals have been treated by the Town as Type II actions under SEQRA per 6 NYCRR Part 617.5, Section 617.5, subpart (c).

If you have any questions, please contact me at 585-325-7190.

Sincerely,



Luann Meyer  
Sr. Project Manager

cc: Jeff Richardson, WM  
Town of Perinton

HO-2021



RECEIVED

MAY 28 2021

TOWN OF PERINTON

HIGH ACRES LANDFILL & RECYCLING CENTER  
A WASTE MANAGEMENT COMPANY

425 Perinton Parkway  
Fairport, New York 14450  
585/223-6132  
585/223-6898 (Fax)

May 27, 2021

Via Hand Delivery  
Ms. Robin Ezell  
Chairperson, Zoning Board of Appeals  
Town of Perinton  
1350 Turk Hill Road  
Fairport, NY 14450

Re: High Acres Landfill & Recycling Center  
Special Use Permit Renewal Application

Dear Chairperson Ezell:

In accordance with the Town of Perinton's Zoning Regulations Section 208-21, Waste Management of New York, LLC (WMNY) has prepared the following Special Use Permit Renewal Application (Application) for the High Acres Landfill & Recycling Center (herein referred to as the Facility or High Acres), which is scheduled to expire on August 22, 2021. Town of Perinton Zoning Regulations require that the Special Use Permit (SUP) be reviewed and renewed every five (5) years. The attached renewal application (Attachment 1) and Long Environmental Assessment Form (Attachment 2) contemplates a straightforward renewal with no changes proposed.

**Site Overview**

The High Acres campus, located in the Town(s) of Perinton and Macedon, includes non-hazardous municipal solid waste disposal, residential recycling, yard waste and organics composting, renewable landfill gas-to-energy production, wildlife habitat management, public access trails, and First Responder training facilities (See Figure 1).

The Facility's landfill development history is detailed in the table below:

Landfill Development History					
Landfill Area	Landfill Area Acreages			Cell Designation (refer to Fig. 1)	Year Constructed
	Baseliner	Overliner	Total		
Closed Landfill Area	-	-	-	N/A	1972
Western Expansion (WEX)	68.1	N/A	68.1	1	1994
				2	1995
				3	1996
				4	1997
				5	1999
				6	1998
				7	2000



Landfill Development History					
Landfill Area	Landfill Area Acreages			Cell Designation (refer to Fig. 1)	Year Constructed
	Baseliner	Overliner	Total		
Parkway Expansion Phase I	7.5	12.6	20.1	8/9	2001
				6-OL	2002
				7-OL	2002
				8/9-O/L	2003
Parkway Expansion Phase II	42.6	15.4	58.0	10, 10-OL	2008
				11, 11-OL	2019 Currently operating in Cells 11 and 11-OL
Parkway Expansion Phase III (Town of Perinton)	5.8	7.4	13.2	12, 13, 13-OL	2017-2021 Currently operating in Cells 12 & 13A

The Facility's SUP issuance history is detailed in the table below.

Special Use Permit History			
High Acres Landfill Area	SUP Executed	Renewal Dates	Expiration Date
Closed Landfill	N/A	N/A	N/A
Western Expansion (WEX)	6/6/2001	3/24/2006, 6/30/2011 8/22/2016	August 22, 2021
Parkway Expansion Phase I	6/6/2001	3/24/2006, 6/30/2011, 8/22/2016	
Parkway Expansion Phase II	1/27/2003	3/24/2006, 6/30/2011	
Parkway Expansion Phase III	3/24/2008	6/30/2011, 8/22/2016	

Note: In 2011, all landfill areas (High Acres, Western Expansion, Phase 1,2,3) were all combined under one common Special Use Permit.

### Operations Update

Landfill construction and operation at High Acres are governed by the Facility's New York State Department of Environmental Conservation (NYSDEC) 6NYCRR Part 360 Permit, dated July 9, 2013. The NYSDEC approved landfill footprint in both the Towns of Perinton and Macedon is 360 acres, of which 266 acres have been constructed with 94 remaining to be constructed. During the term of the current SUP (2016-2021), approximately 31 acres of double composite base liner were constructed at the Facility. The Facility's estimated remaining permitted site life has been calculated to be approximately 33 years. A breakdown of capacity in Perinton is presented below.

Landfill Air Space Summary in Town of Perinton	
Total Permitted Capacity (CY)	30,823,531
Airspace Consumed through 2020 (CY)	22,028,226
Airspace Remaining as of 12/29/2020 (CY)	8,764,880

In the Town of Perinton, the current engineering estimates indicate that approximately 22 million cubic yards (cy) of landfill airspace (i.e. capacity) has been consumed with approximately 8.76 million CY of

landfill airspace remaining. Further details on the current cell design and fill progression operations planned for the next five (5) year period will result in the landfill grading shown in Attachment 3.

The following table highlights many of the key operational metrics over the last five (5) year period for the entire Facility:

<b>Operation Metrics</b>					
	<b>2016</b>	<b>2017</b>	<b>2018</b>	<b>2019</b>	<b>2020</b>
Tons of non-hazardous solid waste managed	968,949	936,102	986,628	938,720	947,986
Landfill gas managed (MSCF)	1,111,306	1,322,736	2,248,676	2,196,826	2,108,310
Landfill gas beneficially used to produce green energy (MSCF)	1,699,887	1,485,572	1,113,885	1,404,018	1,555,872
Tons of yard waste composted/ processed	13,393	14,862	16,331	16,473	13,285
Tons of organics composted	322	381	439	501	234

**Community Assets**

High Acres is home to the Perinton Joint Training Facility constructed in 2010, which consists of a collaboration of the Fairport and Egypt Fire Departments. The facility provides a variety of training opportunities including fire, search and rescue, ladder operations, and vehicle extractions. High Acres is also home to the Fairport and Macedon Police Training Facility constructed in 2016. In 2020, WMNY partnered with the Fairport Football Alumni Association (FFAA) to manage the High Acres Sports Complex which now houses a variety of youth sports including baseball, softball, football, soccer and lacrosse. FFAA estimates that more than 5,000 families utilize this first-class sports facility on an annual basis. These services are provided by WMNY at no-cost and fulfill a need for all these important organizations and our community.

For the last 13 years the High Acres Nature Area (HANA) has been certified by the Wildlife Habitat Council (WHC) for its Corporate Lands for Learning and Wildlife at Work programs. With over 4 miles of trails that are connected to the Town of Perinton’s Crescent Trail Network, HANA provides an oasis for local bird watchers and nature enthusiasts. In addition, HANA serves as an outdoor classroom and research project for Rochester Institute of Technology’s (RIT) Environmental Science Department. Since 2011, WMNY has hosted over 20 undergraduate and graduate student internships at HANA in conjunction with RIT. The data that students gather provide a scientific baseline for the development of a conservation and management plan for the future of HANA.

In November of 2016, High Acres Landfill and Recycling Center was awarded the NYSDEC Environmental Excellence Award for being the first facility in the state to offer an intermodal rail solution to waste management which significantly reduces the environmental footprint of in-state waste management. Transporting waste by train instead of truck eliminates nearly 12,000 tons of carbon dioxide emissions each year. Transportation-related CO2 emissions have been reduced by 70% because of this effort.

The NYSDEC Environmental Excellence Award program recognizes those who are implementing innovative, sustainable actions or working in creative partnerships to improve and protect New York State’s environment and contribute to a healthier economy. Successful candidates demonstrate significant and measurable environmental, economic, and social benefits because of new and unique projects or programs that go beyond standard techniques or regulatory requirements.

### **Landfill Gas Odor Event**

High Acres has been part of the Perinton community for 50 years. The Facility has prided itself on its strong environmental and stewardship record. In late 2017 and early 2018, High Acres landfill experienced a first of its kind odor event associated with two disposal cells, 10 and 11. Cells 10 and 11 experienced a reduced capacity to collect landfill gas. The reduced capacity was a function of a new well technology that was adopted in cells 10 and 11 along with record rain fall. The off-site gas odors associated with this event resulted in the NYSDEC issuing the Facility its first ever odor related Notice of Violation. Any offsite odors are taken very seriously by WMNY, and the company was fully committed to investigate the cause and provide the necessary resources to implement solutions to return our historic good neighbor status that the community has always known.

WMNY secured a number of specialty contractors and consultants to expedite the engineering, monitoring and construction tasks to remedy the situation. During this timeframe, WMNY was in constant communication with the NYSDEC and the Town. Ultimately, geosynthetic and soil cover along with the installation of dozens of new landfill gas wells were installed to contain and collect the landfill gas. No financial penalties or consent orders were issued by the NYSDEC, and in August of 2018 WMNY received notification from the NYSDEC that the company met the obligations and the NOV was closed (Attachment 4).

### **Odor Controls**

WMNY continues to employ the latest odor control measures/technology utilized in the waste industry at the Facility. These measures include extending the water and vapor odor control systems along the extensive perimeter of the Facility. In addition to the more recent measures implemented and upgraded for odor control completed this year, WMNY employs an odor neutralizing system unit as a redundant control measure, as well as the targeted use of misting sticks; it also continues to deploy the mobile misting system and the Odor Boss Directional Vapor Cannon system. The use of both the oil-based and water-based systems allow coverage year-round.

WMNY is committed to operating the Facility in a manner that eliminates undue offsite odors to the maximum extent possible. It should be noted that, even with the unprecedented odor control measures being employed at High Acres, some intermittent and fleeting offsite odors are the byproduct of even a well-operated solid waste management facility. WMNY contends that with the extensive odor control measures in place and its continued commitment to be a good neighbor, High Acres is making every effort to minimize the impact on the community.

A critical component of an effective odor control system is to continually collect performance data, evaluate feedback, and make operational adjustments. The NYSDEC, in conjunction with the Towns of Perinton and Macedon, implemented a dedicated odor hotline and verification system for residents to report and record any concerns regarding High Acres and its operation. All parties involved in the development of this system concluded that the dedicated Hotline provides an efficient, actionable, and verifiable way to address, investigate and respond to residents' complaints. The Hotline alerts WMNY, the NYSDEC and the Towns of a possible odor concern. This provides a timeframe to investigate and report on those concerns through a trained and experienced third-party service, Towpath. The results of those investigations are then communicated via email to WMNY, the NYSDEC and Towns immediately after the investigation. NYSDEC has directed the use of the Hotline as the method of reporting complaints, rather than through the alternative means being used by some residents. NYSDEC has previously noted that the Hotline program is available 24/7 and provides a convenient, rapid, and actionable method of investigating and corroborating/validating reported concerns. Towpath has been trained to use the 8-point butanol odor intensity scale (ASTM E544-10), which is utilized for each investigated Hotline call.

To be as transparent as possible about odor calls received, both the actual call data is sent in real-time and a weekly Hotline Summary Report, compiled and prepared by Barton & Loguidice, is submitted directly to the NYSDEC and the Towns. The information included in this weekly report contains the following:

- Towpath Investigation Services (Towpath) daily routine monitoring surveys and associated findings; and
- NYSDEC Hotline call data, investigations, and associated findings.

WMNY continues to take extensive measures to evaluate, investigate, and respond to all Hotline notifications in a timely manner.

### **Moving Forward**

To ensure High Acres ongoing commitments and monitoring are being satisfied, WMNY staff has been meeting and providing up-to-date communications with the Town of Perinton and NYSDEC on a regular basis, to review operations and ensure the status of on-going mitigation measures.

Working with our stakeholders, WMNY is committed to ensuring that there is a proven scientific methodology and protocol in place for fair and accurate odor investigations. The local NYSDEC staff indicates we are fully compliant with our operating permits, as well as the safeguards we have implemented to control undue off-site odors around the Facility.

WMNY continues to conduct our operations with unprecedented site enhancements. We are confident that these measures have resulted in a significant reduction in the potential for off-site odors. We remain committed to the continued evaluation and deployment of additional mitigation and control measures, including installation of temporary geomembrane liner on intermediate outside slopes. Continuous hydrogen sulfide (H<sub>2</sub>S) monitoring has been in place at the Northside/Dudley School and the High Acres facilities perimeter since March of 2018. H<sub>2</sub>S is an indicator of the presence of landfill gas. An additional monitoring station is located on Route 31F, directly across the street from Magnolia Manor development. To date, more than 500,000 readings have been recorded from stationary H<sub>2</sub>S monitors without any exceedances of NYSDEC standards. In addition, High Acres conducts quarterly Surface Emission Monitoring scans of the entire Facility to identify any landfill gas/methane readings. The surface emission scan of the Facility was recently completed with the fewest detections over the last few years.

Based on our regular communications with the Town and NYSDEC, our on-going review of surface emission scan data, well monitoring data, and off-site H<sub>2</sub>S monitoring data, WMNY is confident that area residents are not being exposed to any potential health or safety hazards. Furthermore, the Facility's gas collection and control system, operating records, odor control programs, offsite H<sub>2</sub>S monitoring data (with zero detections), quarterly surface scans, Hotline notifications and follow up data from trained odor detection consultants, and NYSDEC inspection reports, all indicate the Facility is operating in a manner that minimizes offsite odors to the greatest extent practicable. We remain vigilant in our evaluation and implementation of best management practices and technology to enhance operations.

### **Facility Regulatory Permits/Approvals**

The High Acres Facility is in compliance with all its required Federal, State, and local permits and authorizations. The following is a summary of these requirements:

- 6 NYCRR Part 360 – Solid Waste Management Facilities (DEC)
- 6 NYCRR Part 200 – Prevention and Control of Air Contamination and Air Pollution (DEC)
- 6 NYCRR Part 612, 613, 614 – Petroleum Storage and Handling (DEC)
- 40 CFR Part 61 – National Emissions Standards for Hazardous Air Pollutants (DEC)

- Town of Perinton Special Use Permit
- Town of Macedon Special Use Permit
- State Pollutant Discharge Elimination System Permit (SPDES) (DEC)
- Sewer Use Permit (Monroe County Department of Environmental Services – Division of Pure Waters)
- Air Permits 6 NYCRR Part 201 and USEPA Title V
- Freshwater Wetlands Permit and 401 Water Quality Certification (DEC)
- Section 404 Wetland Permit (U.S. Army Corps of Engineers)
- Full Time NYSDEC on-site monitor who oversees the operation and provides a daily inspection report. Daily reports submitted to Towns).

Attachment 5 summarizes WMNY's commitment to going above and beyond what is required per regulations as it relates to landfill operations. This Special Use Permit Renewal will allow for the continuation of the Facility's existing state-of-the-art solid waste management operations. It is important to note that no changes to the permitted waste acceptance rate, site operating conditions, origin and type of materials managed, or current hours of operation are proposed. WMNY is committed to provide annual reports to the Perinton Conservation Board on the status of the conditions provided in Attachment 6.

WMNY has been a proud Perinton partner for 50 years and is committed to a community based environmental vision. WMNY welcomes the opportunity for representatives to visit High Acres campus and observe firsthand the operation and the unprecedented measures we have adopted to ensure operational excellence. We appreciate your time and commitment and look forward to a continued successful partnership. If you have any questions, please contact me at 585-223-6132.

Waste Management of New York, LLC



Jeffrey Richardson  
Sr. District Manager

cc: Tom Hasek, WMNY  
Luann Meyer, Barton & Loguidice  
Town of Perinton (15 copies)

Attachments

Figure 1 -	Site Plan
Attachment 1 -	2021 Town of Perinton Special Use Permit Renewal Application
Attachment 2 -	2021 Long Environmental Assessment Form – Part 1
Attachment 3 -	Fill Plan 2026
Attachment 4 -	NYSDEC NOV Completion Letter
Attachment 5 -	Landfill Operating Criteria
Attachment 6 -	Perinton Conservation Board SUP Conditions

Figure 1  
Site Plan



Attachment 1  
2021 Town of Perinton  
Special Use Permit Renewal Application





**TOWN OF PERINTON**

1350 TURK HILL ROAD. FAIRPORT, NEW YORK 14450-8796  
(585) 223-0770, Fax: (585) 223-3629, [www.perinton.org](http://www.perinton.org)

NUMBER 40-2021 FEE \$ \_\_\_\_\_  
(verify fee with staff)  
MEETING DATE \_\_\_\_\_

**APPLICATION FORM -SPECIAL USE PERMIT**

**Instructions to Applicant**

1. Submit original and 11 (eleven) copies of this application. Type or print. **If this is an administrative renewal, only one copy of all documentation is required. Please verify with Zoning Board of Appeals (ZBA) Secretary or Director of Buildings & Codes.**
2. Submit original and 11 (eleven) copies of Letter of intent (detailed explanation of request).
3. Submit survey of property (full sized) with 11 copies – marked up to show request.
4. Please review Procedures for filing an application to appear before ZBA, SUP Application Requirements, Instructions for Customary Home Occupations (if applicable), Instructions for Temporary Activity Permit (if applicable), Instructions for keeping of bees, chickens & other animals (if applicable).
5. An EAF may be required. (In most cases, an EAF is not required, please verify with Zoning Board of Appeals (ZBA) Secretary or Director of Buildings & Codes. If an EAF is required, it may be obtained from [Link](#) to Short EAF & Long EAF parts 1, 2 & 3

**1. APPLICANT**

Name Waste Management of NY, LLC Phone 585-223-6132  
 Street& Number 425 Perinton Pkwy City Fairport Zip 14450  
 Interest in Property: Owner  Lessee \_\_\_\_\_ Other \_\_\_\_\_

**2. OWNER (if other than applicant)**

Name Same as above. Phone \_\_\_\_\_  
 Street& Number \_\_\_\_\_ City \_\_\_\_\_ Zip \_\_\_\_\_

**3. ATTORNEY (If represented)**

Name Same as above. Phone \_\_\_\_\_  
 Street& Number \_\_\_\_\_ City \_\_\_\_\_ Zip \_\_\_\_\_

**4. INTEREST:** Does any officer or employee of the State of New York, County of Monroe, or Town of Perinton have any interest in the owner/applicant or the subject property?

Yes \_\_\_\_\_ No

If yes, who?

Name \_\_\_\_\_ Address \_\_\_\_\_

INTEREST (explain): \_\_\_\_\_

5. **LOCATION:** Street Address or Legal Description (subdivision and lot number)

425 Perinton Parkway

6. **SIZE OF PARCEL:** 1,000+ acres (Total acreage includes both Perinton/Macedon)

7. **PRESENT USE OF PROPERTY:** Landfill (existing/permited)

8. **ZONING DISTRICT:** IND **TAX ACCOUNT #** 167.01-1-2.2

9. **Describe specifically the nature of your request:**

Special Use Permit renewal for existing Western Expansion Landfill at Waste Management of NY's  
High Acres Landfill & Recycling Center, located in both the Towns of Perinton and Macedon, New York.  
This project includes the permitted Western Expansion, Phase I, Phase II, and Phase III Parkway  
Expansions.

**10. Describe the location, use and size of structures and other land use within 100 feet of the boundaries of the subject property:**

The location is the present site of the High Acres Landfill. The property is currently used for landfilling  
operations. Adjacent properties are zoned industrial and agricultural. The proposed action is the  
continuation of the operation of a landfill.

11. The criteria used by the Zoning Board of Appeals of the Town of Perinton are set forth in Section 208-54 of the Zoning Law. Special Use Permits can only be granted where the proposed is already a permitted use, but requires Zoning Board approval. That approval can only be given when the applicant offers proof that his proposed use will not violate any of the following factors:

A. You must show that your proposal will be in harmony with the general purpose and intent of the Zoning Ordinance of the Town of Perinton, considering the location, magnitude of the use, the nature and intensity of the operations involved in or conducted in connection with it, and the size of the subject property with respect to the streets giving access to the subject property.

Will your proposed use be detrimental to the neighborhood due to location? No  Yes \_\_\_\_\_

The nature or magnitude of use? No  Yes \_\_\_\_\_

There have been no significant operational changes since the previous special use permit renewal.

Inadequate access to property? No  Yes \_\_\_\_\_

If yes to any of above, explain how it will be detrimental. If effect can be lessened in some manner, explain how: \_\_\_\_\_  
\_\_\_\_\_  
\_\_\_\_\_

B. Will your proposed use tend to depreciate adjacent property or alter or be detrimental to the character of the neighborhood? No  Yes \_\_\_\_\_ No changes since previous renewal.

If yes, explain how it will be detrimental. If effect can be lessened in some manner, explain how: \_\_\_\_\_  
\_\_\_\_\_  
\_\_\_\_\_

C. Will your proposed use create a hazard to health, or the general welfare of the neighborhood or significantly alter the flow of traffic? No  Yes \_\_\_\_\_ No changes since previous renewal.

If yes, explain how. If effect can be lessened in some manner, explain how. \_\_\_\_\_  
\_\_\_\_\_  
\_\_\_\_\_

**I certify that the information supplied on this application is complete and accurate, and that the project described, if approved, will be completed and the premises used as stipulated in this request.**

Signature of Applicant: \_\_\_\_\_ Date \_\_\_\_\_

Printed name of Applicant \_\_\_\_\_

**Property Owner** (If other than applicant)

**I have read and familiarized myself with the contents of this application and do hereby consent to its submission and processing.**

Signature of property owner  Date 5/27/21

Printed Name of property owner JERRY RICHARDSON

Attachment 2  
2021 Long Environmental Assessment Form – Part 1

**Full Environmental Assessment Form**  
**Part 1 - Project and Setting**

**Instructions for Completing Part 1**

**Part 1 is to be completed by the applicant or project sponsor.** Responses become part of the application for approval or funding, are subject to public review, and may be subject to further verification.

Complete Part 1 based on information currently available. If additional research or investigation would be needed to fully respond to any item, please answer as thoroughly as possible based on current information; indicate whether missing information does not exist, or is not reasonably available to the sponsor; and, when possible, generally describe work or studies which would be necessary to update or fully develop that information.

Applicants/sponsors must complete all items in Sections A & B. In Sections C, D & E, most items contain an initial question that must be answered either "Yes" or "No". If the answer to the initial question is "Yes", complete the sub-questions that follow. If the answer to the initial question is "No", proceed to the next question. Section F allows the project sponsor to identify and attach any additional information. Section G requires the name and signature of the applicant or project sponsor to verify that the information contained in Part 1 is accurate and complete.

**A. Project and Applicant/Sponsor Information.**

Name of Action or Project: High Acres Landfill & Recycling Center - Western Expansion Landfill, and Parkway Expansion - Phase I, Phase II, and Phase III - SUP Renewal		
Project Location (describe, and attach a general location map): 425 Perinton Parkway, Fairport, NY 14450		
Brief Description of Proposed Action (include purpose or need): WMNY has prepared the following Full EAF as part of the special use Permit Renewal Application for the existing, permitted Western Expansion Landfill (WEX), Parkway Expansion Phase I (Phase I), Parkway Expansion Phase II (Phase II), and Parkway Expansion - Phase III (Phase III).		
Name of Applicant/Sponsor: Waste Management of New York, LLC		Telephone: 585-223-6132
		E-Mail: jrichard3@wm.com
Address: 425 Perinton Parkway		
City/PO: Fairport	State: NY	Zip Code: 14450
Project Contact (if not same as sponsor; give name and title/role): same as applicant		Telephone:
		E-Mail:
Address:		
City/PO:	State:	Zip Code:
Property Owner (if not same as sponsor): same as applicant		Telephone:
		E-Mail:
Address:		
City/PO:	State:	Zip Code:

**B. Government Approvals**

**B. Government Approvals, Funding, or Sponsorship.** (“Funding” includes grants, loans, tax relief, and any other forms of financial assistance.)

Government Entity	If Yes: Identify Agency and Approval(s) Required	Application Date (Actual or projected)
a. City Counsel, Town Board, <input type="checkbox"/> Yes <input checked="" type="checkbox"/> No or Village Board of Trustees		
b. City, Town or Village Planning Board or Commission <input type="checkbox"/> Yes <input checked="" type="checkbox"/> No		
c. City, Town or Village Zoning Board of Appeals <input checked="" type="checkbox"/> Yes <input type="checkbox"/> No	Town of Perinton Zoning Board of Appeals	January 2021
d. Other local agencies <input type="checkbox"/> Yes <input checked="" type="checkbox"/> No		
e. County agencies <input type="checkbox"/> Yes <input checked="" type="checkbox"/> No		
f. Regional agencies <input type="checkbox"/> Yes <input checked="" type="checkbox"/> No		
g. State agencies <input type="checkbox"/> Yes <input checked="" type="checkbox"/> No		
h. Federal agencies <input type="checkbox"/> Yes <input checked="" type="checkbox"/> No		
i. Coastal Resources. i. Is the project site within a Coastal Area, or the waterfront area of a Designated Inland Waterway? <input type="checkbox"/> Yes <input checked="" type="checkbox"/> No  ii. Is the project site located in a community with an approved Local Waterfront Revitalization Program? <input type="checkbox"/> Yes <input checked="" type="checkbox"/> No iii. Is the project site within a Coastal Erosion Hazard Area? <input type="checkbox"/> Yes <input checked="" type="checkbox"/> No		

**C. Planning and Zoning**

**C.1. Planning and zoning actions.**

Will administrative or legislative adoption, or amendment of a plan, local law, ordinance, rule or regulation be the only approval(s) which must be granted to enable the proposed action to proceed?  Yes  No

- If Yes, complete sections C, F and G.
- If No, proceed to question C.2 and complete all remaining sections and questions in Part 1

**C.2. Adopted land use plans.**

a. Do any municipally- adopted (city, town, village or county) comprehensive land use plan(s) include the site where the proposed action would be located?  Yes  No

If Yes, does the comprehensive plan include specific recommendations for the site where the proposed action would be located?  Yes  No N/A  
 Portions of the site have existed since 1971.

b. Is the site of the proposed action within any local or regional special planning district (for example: Greenway; Brownfield Opportunity Area (BOA); designated State or Federal heritage area; watershed management plan; or other?)  Yes  No

If Yes, identify the plan(s):

Remediaton Sites:828033, Remediaton Sites:828008, Remediaton Sites:828014, NYS Heritage Areas:West Erie Canal Corridor

c. Is the proposed action located wholly or partially within an area listed in an adopted municipal open space plan, or an adopted municipal farmland protection plan?  Yes  No

If Yes, identify the plan(s):

**C.3. Zoning**

a. Is the site of the proposed action located in a municipality with an adopted zoning law or ordinance.  Yes  No  
If Yes, what is the zoning classification(s) including any applicable overlay district?  
\_\_\_\_\_

b. Is the use permitted or allowed by a special or conditional use permit?  Yes  No

c. Is a zoning change requested as part of the proposed action?  Yes  No

If Yes,  
i. What is the proposed new zoning for the site? \_\_\_\_\_

**C.4. Existing community services.**

a. In what school district is the project site located? Fairport Central School District

b. What police or other public protection forces serve the project site?  
Fairport Police Dept.

c. Which fire protection and emergency medical services serve the project site?  
Fairport Ambulance

d. What parks serve the project site?  
N/A

**D. Project Details**

**D.1. Proposed and Potential Development**

a. What is the general nature of the proposed action (e.g., residential, industrial, commercial, recreational; if mixed, include all components)? existing solid waste landfill

b. a. Total acreage of the site of the proposed action? \_\_\_\_\_ 200 acres

b. Total acreage to be physically disturbed? \_\_\_\_\_ 200 acres

c. Total acreage (project site and any contiguous properties) owned or controlled by the applicant or project sponsor? \_\_\_\_\_ 1000+ acres

c. Is the proposed action an expansion of an existing project or use?  Yes  No

i. If Yes, what is the approximate percentage of the proposed expansion and identify the units (e.g., acres, miles, housing units, square feet)? % No expansion proposed Units: \_\_\_\_\_

d. Is the proposed action a subdivision, or does it include a subdivision?  Yes  No

If Yes,  
i. Purpose or type of subdivision? (e.g., residential, industrial, commercial; if mixed, specify types) \_\_\_\_\_

ii. Is a cluster/conservation layout proposed?  Yes  No

iii. Number of lots proposed? \_\_\_\_\_

iv. Minimum and maximum proposed lot sizes? Minimum \_\_\_\_\_ Maximum \_\_\_\_\_

e. Will the proposed action be constructed in multiple phases?  Yes  No

i. If No, anticipated period of construction: \_\_\_\_\_ months

- ii. If Yes:
- Total number of phases anticipated \_\_\_\_\_ TBD
  - Anticipated commencement date of phase 1 (including demolition) \_\_\_\_\_ month 1994 year
  - Anticipated completion date of final phase \_\_\_\_\_ month TBD year
  - Generally describe connections or relationships among phases, including any contingencies where progress of one phase may determine timing or duration of future phases: \_\_\_\_\_  
\_\_\_\_\_  
\_\_\_\_\_

f. Does the project include new residential uses?  Yes  No

If Yes, show numbers of units proposed.

One Family      Two Family      Three Family      Multiple Family (four or more)

Initial Phase

At completion  
of all phases

\_\_\_\_\_

\_\_\_\_\_

g. Does the proposed action include new non-residential construction (including expansions)?  Yes  No

If Yes,

i. Total number of structures \_\_\_\_\_

ii. Dimensions (in feet) of largest proposed structure: \_\_\_\_\_ height; \_\_\_\_\_ width; and \_\_\_\_\_ length

iii. Approximate extent of building space to be heated or cooled: \_\_\_\_\_ square feet

h. Does the proposed action include construction or other activities that will result in the impoundment of any liquids, such as creation of a water supply, reservoir, pond, lake, waste lagoon or other storage?  Yes  No

If Yes,

i. Purpose of the impoundment: \_\_\_\_\_

ii. If a water impoundment, the principal source of the water:  Ground water  Surface water streams  Other specify: \_\_\_\_\_

iii. If other than water, identify the type of impounded/contained liquids and their source. \_\_\_\_\_

iv. Approximate size of the proposed impoundment. Volume: \_\_\_\_\_ million gallons; surface area: \_\_\_\_\_ acres

v. Dimensions of the proposed dam or impounding structure: \_\_\_\_\_ height; \_\_\_\_\_ length

vi. Construction method/materials for the proposed dam or impounding structure (e.g., earth fill, rock, wood, concrete): \_\_\_\_\_

## D.2. Project Operations

a. Does the proposed action include any excavation, mining, or dredging, during construction, operations, or both? (Not including general site preparation, grading or installation of utilities or foundations where all excavated materials will remain onsite)  Yes  No

If Yes:

i. What is the purpose of the excavation or dredging? \_\_\_\_\_

ii. How much material (including rock, earth, sediments, etc.) is proposed to be removed from the site?

• Volume (specify tons or cubic yards): \_\_\_\_\_

• Over what duration of time? \_\_\_\_\_

iii. Describe nature and characteristics of materials to be excavated or dredged, and plans to use, manage or dispose of them. \_\_\_\_\_

iv. Will there be onsite dewatering or processing of excavated materials?  Yes  No

If yes, describe. \_\_\_\_\_

v. What is the total area to be dredged or excavated? \_\_\_\_\_ acres

vi. What is the maximum area to be worked at any one time? \_\_\_\_\_ acres

vii. What would be the maximum depth of excavation or dredging? \_\_\_\_\_ feet

viii. Will the excavation require blasting?  Yes  No

ix. Summarize site reclamation goals and plan: \_\_\_\_\_

b. Would the proposed action cause or result in alteration of, increase or decrease in size of, or encroachment into any existing wetland, waterbody, shoreline, beach or adjacent area?  Yes  No

If Yes:

i. Identify the wetland or waterbody which would be affected (by name, water index number, wetland map number or geographic description): \_\_\_\_\_



ii. Describe how the proposed action would affect that waterbody or wetland, e.g. excavation, fill, placement of structures, or alteration of channels, banks and shorelines. Indicate extent of activities, alterations and additions in square feet or acres:

\_\_\_\_\_  
\_\_\_\_\_  
\_\_\_\_\_

iii. Will the proposed action cause or result in disturbance to bottom sediments?  Yes  No  
If Yes, describe: \_\_\_\_\_

iv. Will the proposed action cause or result in the destruction or removal of aquatic vegetation?  Yes  No  
If Yes:

- acres of aquatic vegetation proposed to be removed: \_\_\_\_\_
- expected acreage of aquatic vegetation remaining after project completion: \_\_\_\_\_
- purpose of proposed removal (e.g. beach clearing, invasive species control, boat access): \_\_\_\_\_
- proposed method of plant removal: \_\_\_\_\_
- if chemical/herbicide treatment will be used, specify product(s): \_\_\_\_\_

v. Describe any proposed reclamation/mitigation following disturbance: \_\_\_\_\_

c. Will the proposed action use, or create a new demand for water?  Yes  No

If Yes:

i. Total anticipated water usage/demand per day: \_\_\_\_\_ gallons/day

ii. Will the proposed action obtain water from an existing public water supply?  Yes  No

If Yes:

- Name of district or service area: \_\_\_\_\_
- Does the existing public water supply have capacity to serve the proposal?  Yes  No
- Is the project site in the existing district?  Yes  No
- Is expansion of the district needed?  Yes  No
- Do existing lines serve the project site?  Yes  No

iii. Will line extension within an existing district be necessary to supply the project?  Yes  No

If Yes:

- Describe extensions or capacity expansions proposed to serve this project: \_\_\_\_\_
- Source(s) of supply for the district: \_\_\_\_\_

iv. Is a new water supply district or service area proposed to be formed to serve the project site?  Yes  No

If Yes:

- Applicant/sponsor for new district: \_\_\_\_\_
- Date application submitted or anticipated: \_\_\_\_\_
- Proposed source(s) of supply for new district: \_\_\_\_\_

v. If a public water supply will not be used, describe plans to provide water supply for the project: \_\_\_\_\_

vi. If water supply will be from wells (public or private), what is the maximum pumping capacity: \_\_\_\_\_ gallons/minute.

d. Will the proposed action generate liquid wastes?  Yes  No

If Yes:

i. Total anticipated liquid waste generation per day: \_\_\_\_\_ 5,000 - 10,000 gallons/day

ii. Nature of liquid wastes to be generated (e.g., sanitary wastewater, industrial; if combination, describe all components and approximate volumes or proportions of each): \_\_\_\_\_

Leachate

\_\_\_\_\_

iii. Will the proposed action use any existing public wastewater treatment facilities?  Yes  No

If Yes:

- Name of wastewater treatment plant to be used: Frank E. Vanlare WWTP
- Name of district: \_\_\_\_\_
- Does the existing wastewater treatment plant have capacity to serve the project?  Yes  No
- Is the project site in the existing district?  Yes  No
- Is expansion of the district needed?  Yes  No

- Do existing sewer lines serve the project site?  Yes  No
- Will a line extension within an existing district be necessary to serve the project?  Yes  No

If Yes:

- Describe extensions or capacity expansions proposed to serve this project: \_\_\_\_\_  
 \_\_\_\_\_  
 \_\_\_\_\_

iv. Will a new wastewater (sewage) treatment district be formed to serve the project site?  Yes  No

If Yes:

- Applicant/sponsor for new district: \_\_\_\_\_
- Date application submitted or anticipated: \_\_\_\_\_
- What is the receiving water for the wastewater discharge? \_\_\_\_\_

v. If public facilities will not be used, describe plans to provide wastewater treatment for the project, including specifying proposed receiving water (name and classification if surface discharge or describe subsurface disposal plans):  
 \_\_\_\_\_  
 \_\_\_\_\_

vi. Describe any plans or designs to capture, recycle or reuse liquid waste: \_\_\_\_\_  
 \_\_\_\_\_  
 \_\_\_\_\_

e. Will the proposed action disturb more than one acre and create stormwater runoff, either from new point sources (i.e. ditches, pipes, swales, curbs, gutters or other concentrated flows of stormwater) or non-point source (i.e. sheet flow) during construction or post construction?  Yes  No

Nothing new proposed.

If Yes:

i. How much impervious surface will the project create in relation to total size of project parcel?  
 \_\_\_\_\_ Square feet or \_\_\_\_\_ acres (impervious surface)      A Stormwater Pollution Prevention Plan exists  
 \_\_\_\_\_ Square feet or \_\_\_\_\_ acres (parcel size)      for the site and has been implemented.

ii. Describe types of new point sources. \_\_\_\_\_  
 \_\_\_\_\_

iii. Where will the stormwater runoff be directed (i.e. on-site stormwater management facility/structures, adjacent properties, groundwater, on-site surface water or off-site surface waters)?  
 \_\_\_\_\_  
 \_\_\_\_\_

- If to surface waters, identify receiving water bodies or wetlands: \_\_\_\_\_  
 \_\_\_\_\_
- Will stormwater runoff flow to adjacent properties?  Yes  No

iv. Does the proposed plan minimize impervious surfaces, use pervious materials or collect and re-use stormwater?  Yes  No

f. Does the proposed action include, or will it use on-site, one or more sources of air emissions, including fuel combustion, waste incineration, or other processes or operations?  Yes  No

Nothing new proposed.

If Yes, identify:

i. Mobile sources during project operations (e.g., heavy equipment, fleet or delivery vehicles)  
 Continuation of the use of heavy equipment for operations.

ii. Stationary sources during construction (e.g., power generation, structural heating, batch plant, crushers)  
 \_\_\_\_\_

iii. Stationary sources during operations (e.g., process emissions, large boilers, electric generation)  
 \_\_\_\_\_

g. Will any air emission sources named in D.2.f (above), require a NY State Air Registration, Air Facility Permit, or Federal Clean Air Act Title IV or Title V Permit?  Yes  No

Site is covered under a current Title V Air Facility Permit.

If Yes:

i. Is the project site located in an Air quality non-attainment area? (Area routinely or periodically fails to meet ambient air quality standards for all or some parts of the year)  Yes  No

ii. In addition to emissions as calculated in the application, the project will generate:

- \_\_\_\_\_ Tons/year (short tons) of Carbon Dioxide (CO<sub>2</sub>)
- \_\_\_\_\_ Tons/year (short tons) of Nitrous Oxide (N<sub>2</sub>O)
- \_\_\_\_\_ Tons/year (short tons) of Perfluorocarbons (PFCs)
- \_\_\_\_\_ Tons/year (short tons) of Sulfur Hexafluoride (SF<sub>6</sub>)
- \_\_\_\_\_ Tons/year (short tons) of Carbon Dioxide equivalent of Hydrofluorocarbons (HFCs)
- \_\_\_\_\_ Tons/year (short tons) of Hazardous Air Pollutants (HAPs)

h. Will the proposed action generate or emit methane (including, but not limited to, sewage treatment plants, landfills, composting facilities)?  Yes  No

If Yes:

The site continues to generate or emit methane, no increase is expected to be associated with this renewal.

i. Estimate methane generation in tons/year (metric): \_\_\_\_\_

ii. Describe any methane capture, control or elimination measures included in project design (e.g., combustion to generate heat or electricity, flaring): \_\_\_\_\_

i. Will the proposed action result in the release of air pollutants from open-air operations or processes, such as quarry or landfill operations?  Yes  No

If Yes: Describe operations and nature of emissions (e.g., diesel exhaust, rock particulates/dust):

The site is an existing municipal solid waste facility. \_\_\_\_\_

j. Will the proposed action result in a substantial increase in traffic above present levels or generate substantial new demand for transportation facilities or services?  Yes  No

If Yes:

i. When is the peak traffic expected (Check all that apply):  Morning  Evening  Weekend

Randomly between hours of \_\_\_\_\_ to \_\_\_\_\_.

ii. For commercial activities only, projected number of truck trips/day and type (e.g., semi trailers and dump trucks): \_\_\_\_\_

iii. Parking spaces: Existing \_\_\_\_\_ Proposed \_\_\_\_\_ Net increase/decrease \_\_\_\_\_

iv. Does the proposed action include any shared use parking?  Yes  No

v. If the proposed action includes any modification of existing roads, creation of new roads or change in existing access, describe: \_\_\_\_\_

vi. Are public/private transportation service(s) or facilities available within 1/2 mile of the proposed site?  Yes  No

vii. Will the proposed action include access to public transportation or accommodations for use of hybrid, electric or other alternative fueled vehicles?  Yes  No

viii. Will the proposed action include plans for pedestrian or bicycle accommodations for connections to existing pedestrian or bicycle routes?  Yes  No

k. Will the proposed action (for commercial or industrial projects only) generate new or additional demand for energy?  Yes  No

If Yes:

i. Estimate annual electricity demand during operation of the proposed action: \_\_\_\_\_

ii. Anticipated sources/suppliers of electricity for the project (e.g., on-site combustion, on-site renewable, via grid/local utility, or other): \_\_\_\_\_

iii. Will the proposed action require a new, or an upgrade, to an existing substation?  Yes  No

l. Hours of operation. Answer all items which apply.

i. During Construction:

- Monday - Friday: \_\_\_\_\_ 6am - 4:30pm
- Saturday: \_\_\_\_\_ 6am - 2pm
- Sunday: \_\_\_\_\_ Closed
- Holidays: \_\_\_\_\_ Closed on major holidays

ii. During Operations:

- Monday - Friday: \_\_\_\_\_ 7am - 4:30pm
- Saturday: \_\_\_\_\_ 7am - 2pm
- Sunday: \_\_\_\_\_ Closed
- Holidays: \_\_\_\_\_ Closed

m. Will the proposed action produce noise that will exceed existing ambient noise levels during construction, operation, or both?  Yes  No

If yes:

i. Provide details including sources, time of day and duration:

\_\_\_\_\_

\_\_\_\_\_

ii. Will the proposed action remove existing natural barriers that could act as a noise barrier or screen?  Yes  No

Describe: \_\_\_\_\_

\_\_\_\_\_

---

n. Will the proposed action have outdoor lighting?  Yes  No

If yes:

i. Describe source(s), location(s), height of fixture(s), direction/aim, and proximity to nearest occupied structures:

\_\_\_\_\_

\_\_\_\_\_

ii. Will proposed action remove existing natural barriers that could act as a light barrier or screen?  Yes  No

Describe: \_\_\_\_\_

\_\_\_\_\_

---

o. Does the proposed action have the potential to produce odors for more than one hour per day?  Yes  No

If Yes, describe possible sources, potential frequency and duration of odor emissions, and proximity to nearest occupied structures: \_\_\_\_\_

The site is an active solid waste landfill, which may produce odors.

\_\_\_\_\_

---

p. Will the proposed action include any bulk storage of petroleum (combined capacity of over 1,100 gallons) or chemical products 185 gallons in above ground storage or any amount in underground storage?  Yes  No

If Yes:

i. Product(s) to be stored \_\_\_\_\_

ii. Volume(s) \_\_\_\_\_ per unit time \_\_\_\_\_ (e.g., month, year)

iii. Generally, describe the proposed storage facilities: \_\_\_\_\_

\_\_\_\_\_

---

q. Will the proposed action (commercial, industrial and recreational projects only) use pesticides (i.e., herbicides, insecticides) during construction or operation?  Yes  No

If Yes:

i. Describe proposed treatment(s):

\_\_\_\_\_

\_\_\_\_\_

\_\_\_\_\_

ii. Will the proposed action use Integrated Pest Management Practices?  Yes  No

---

r. Will the proposed action (commercial or industrial projects only) involve or require the management or disposal of solid waste (excluding hazardous materials)?  Yes  No

The site is an active solid waste landfill.

If Yes:

i. Describe any solid waste(s) to be generated during construction or operation of the facility:

- Construction: \_\_\_\_\_ tons per \_\_\_\_\_ (unit of time) Permitted waste
- Operation : \_\_\_\_\_ 3,500 tons per \_\_\_\_\_ day (unit of time) Acceptance rate

ii. Describe any proposals for on-site minimization, recycling or reuse of materials to avoid disposal as solid waste:

- Construction: N/A \_\_\_\_\_
- Operation: N/A \_\_\_\_\_

\_\_\_\_\_

iii. Proposed disposal methods/facilities for solid waste generated on-site:

- Construction: High Acres Landfill (the site itself) \_\_\_\_\_
- Operation: High Acres Landfill (the site itself) \_\_\_\_\_

\_\_\_\_\_

s. Does the proposed action include construction or modification of a solid waste management facility?  Yes  No

If Yes:

i. Type of management or handling of waste proposed for the site (e.g., recycling or transfer station, composting, landfill, or other disposal activities): Landfill

ii. Anticipated rate of disposal/processing:

- \_\_\_\_\_ Tons/month, if transfer or other non-combustion/thermal treatment, or
- \_\_\_\_\_ Tons/hour, if combustion or thermal treatment

iii. If landfill, anticipated site life: 40+ years

t. Will the proposed action at the site involve the commercial generation, treatment, storage, or disposal of hazardous waste?  Yes  No

If Yes:

i. Name(s) of all hazardous wastes or constituents to be generated, handled or managed at facility: \_\_\_\_\_

ii. Generally describe processes or activities involving hazardous wastes or constituents: \_\_\_\_\_

iii. Specify amount to be handled or generated \_\_\_\_\_ tons/month

iv. Describe any proposals for on-site minimization, recycling or reuse of hazardous constituents: \_\_\_\_\_

v. Will any hazardous wastes be disposed at an existing offsite hazardous waste facility?  Yes  No

If Yes: provide name and location of facility: \_\_\_\_\_

If No: describe proposed management of any hazardous wastes which will not be sent to a hazardous waste facility: \_\_\_\_\_

### E. Site and Setting of Proposed Action

#### E.1. Land uses on and surrounding the project site

a. Existing land uses.

i. Check all uses that occur on, adjoining and near the project site.

- Urban  Industrial  Commercial  Residential (suburban)  Rural (non-farm)  
 Forest  Agriculture  Aquatic  Other (specify): Landfill

ii. If mix of uses, generally describe: \_\_\_\_\_

b. Land uses and covertsypes on the project site.

Land use or Covertypes	Current Acreage	Acreage After Project Completion	Change (Acres +/-)
• Roads, buildings, and other paved or impervious surfaces	10	10	0
• Forested	10	10	0
• Meadows, grasslands or brushlands (non-agricultural, including abandoned agricultural)	0	0	0
• Agricultural (includes active orchards, field, greenhouse etc.)	0	0	0
• Surface water features (lakes, ponds, streams, rivers, etc.)	7	7	0
• Wetlands (freshwater or tidal)	0	0	0
• Non-vegetated (bare rock, earth or fill)	13	13	0
• Other Describe: <u>Landfill (existing/permited)</u>	200	200	0

c. Is the project site presently used by members of the community for public recreation?  Yes  No  
i. If Yes: explain: \_\_\_\_\_

d. Are there any facilities serving children, the elderly, people with disabilities (e.g., schools, hospitals, licensed day care centers, or group homes) within 1500 feet of the project site?  Yes  No  
If Yes,  
i. Identify Facilities: \_\_\_\_\_

e. Does the project site contain an existing dam?  Yes  No  
If Yes:  
i. Dimensions of the dam and impoundment:  
• Dam height: \_\_\_\_\_ feet  
• Dam length: \_\_\_\_\_ feet  
• Surface area: \_\_\_\_\_ acres  
• Volume impounded: \_\_\_\_\_ gallons OR acre-feet  
ii. Dam's existing hazard classification: \_\_\_\_\_  
iii. Provide date and summarize results of last inspection: \_\_\_\_\_

f. Has the project site ever been used as a municipal, commercial or industrial solid waste management facility, or does the project site adjoin property which is now, or was at one time, used as a solid waste management facility?  Yes  No  
If Yes:  
i. Has the facility been formally closed?  Yes  No  
• If yes, cite sources/documentation: The closed landfill was closed in 1995, the remaining permitted landfill is active.  
ii. Describe the location of the project site relative to the boundaries of the solid waste management facility:  
N/A  
iii. Describe any development constraints due to the prior solid waste activities: None.

g. Have hazardous wastes been generated, treated and/or disposed of at the site, or does the project site adjoin property which is now or was at one time used to commercially treat, store and/or dispose of hazardous waste?  Yes  No  
If Yes:  
i. Describe waste(s) handled and waste management activities, including approximate time when activities occurred: \_\_\_\_\_

h. Potential contamination history. Has there been a reported spill at the proposed project site, or have any remedial actions been conducted at or adjacent to the proposed site?  Yes  No  
If Yes:  
i. Is any portion of the site listed on the NYSDEC Spills Incidents database or Environmental Site Remediation database? Check all that apply:  Yes  No  
 Yes – Spills Incidents database Provide DEC ID number(s): \_\_\_\_\_  
 Yes – Environmental Site Remediation database Provide DEC ID number(s): 828033, 828008, 828014  
 Neither database  
ii. If site has been subject of RCRA corrective activities, describe control measures: \_\_\_\_\_  
iii. Is the project within 2000 feet of any site in the NYSDEC Environmental Site Remediation database?  Yes  No  
If yes, provide DEC ID number(s): 828033, 828008, 828014  
iv. If yes to (i), (ii) or (iii) above, describe current status of site(s):  
\* The remedial site 828014 was the closed portion of High Acres Landfill. The remediation has been completed and no further remedial action is required.

v. Is the project site subject to an institutional control limiting property uses?  Yes  No

- If yes, DEC site ID number: \_\_\_\_\_
- Describe the type of institutional control (e.g., deed restriction or easement): \_\_\_\_\_
- Describe any use limitations: \_\_\_\_\_
- Describe any engineering controls: \_\_\_\_\_
- Will the project affect the institutional or engineering controls in place?  Yes  No
- Explain: \_\_\_\_\_  
 \_\_\_\_\_  
 \_\_\_\_\_

**E.2. Natural Resources On or Near Project Site**

a. What is the average depth to bedrock on the project site? \_\_\_\_\_ >5 feet

b. Are there bedrock outcroppings on the project site?  Yes  No  
 If Yes, what proportion of the site is comprised of bedrock outcroppings? \_\_\_\_\_ %

c. Predominant soil type(s) present on project site:

Hilton and Ontario loams	_____	20 %
Phelps and Sun fine sandy loams	_____	20 %
Madrid fine sandy loam	_____	20 %

d. What is the average depth to the water table on the project site? Average: \_\_\_\_\_ >5 feet

e. Drainage status of project site soils:  Well Drained: \_\_\_\_\_ 60 % of site  
 Moderately Well Drained: \_\_\_\_\_ 35 % of site  
 Poorly Drained \_\_\_\_\_ 5 % of site

f. Approximate proportion of proposed action site with slopes:  0-10%: \_\_\_\_\_ 100 % of site  
 10-15%: \_\_\_\_\_ % of site  
 15% or greater: \_\_\_\_\_ % of site

g. Are there any unique geologic features on the project site?  Yes  No  
 If Yes, describe: \_\_\_\_\_  
 \_\_\_\_\_

**h. Surface water features.**

i. Does any portion of the project site contain wetlands or other waterbodies (including streams, rivers, ponds or lakes)?  Yes  No  
**Permits have been received for any wetland disturbance previously proposed.**

ii. Do any wetlands or other waterbodies adjoin the project site?  Yes  No  
**No changes since previous renewal.**

If Yes to either i or ii, continue. If No, skip to E.2.i.

iii. Are any of the wetlands or waterbodies within or adjoining the project site regulated by any federal, state or local agency?  Yes  No

iv. For each identified regulated wetland and waterbody on the project site, provide the following information:

- Streams: Name 846-76, 898-155 Classification B, C
- Lakes or Ponds: Name 846-76 Classification B
- Wetlands: Name Federal Waters, NYS Wetland, Federal Waters, Fe... Approximate Size NYS Wetland (in a...)
- Wetland No. (if regulated by DEC) PR-1, PR-23, MA-12, MA-15

v. Are any of the above water bodies listed in the most recent compilation of NYS water quality-impaired waterbodies?  Yes  No

If yes, name of impaired water body/bodies and basis for listing as impaired:  
 Name - Pollutants - Uses: Thomas Creek/White Brook and tribs - Nutrients - Recreation; Public Bathing; Aquatic Life

i. Is the project site in a designated Floodway?  Yes  No

j. Is the project site in the 100-year Floodplain?  Yes  No

k. Is the project site in the 500-year Floodplain?  Yes  No

l. Is the project site located over, or immediately adjoining, a primary, principal or sole source aquifer?  Yes  No  
 If Yes:

i. Name of aquifer: Principal Aquifer, Primary Aquifer

m. Identify the predominant wildlife species that occupy or use the project site: \_\_\_\_\_  
 Nothing new to report since previous \_\_\_\_\_  
 renewal. \_\_\_\_\_

n. Does the project site contain a designated significant natural community?  Yes  No  
 If Yes:  
 i. Describe the habitat/community (composition, function, and basis for designation): \_\_\_\_\_  
 ii. Source(s) of description or evaluation: \_\_\_\_\_  
 iii. Extent of community/habitat:  
 • Currently: \_\_\_\_\_ acres  
 • Following completion of project as proposed: \_\_\_\_\_ acres  
 • Gain or loss (indicate + or -): \_\_\_\_\_ acres

o. Does project site contain any species of plant or animal that is listed by the federal government or NYS as endangered or threatened, or does it contain any areas identified as habitat for an endangered or threatened species?  Yes  No  
 If Yes:  
 i. Species and listing (endangered or threatened): \_\_\_\_\_  
 Pied-billed Grebe

p. Does the project site contain any species of plant or animal that is listed by NYS as rare, or as a species of special concern?  Yes  No  
 If Yes:  
 i. Species and listing: \_\_\_\_\_

q. Is the project site or adjoining area currently used for hunting, trapping, fishing or shell fishing?  Yes  No  
 If yes, give a brief description of how the proposed action may affect that use: \_\_\_\_\_  
 Outside of landfill operations.

**E.3. Designated Public Resources On or Near Project Site**

a. Is the project site, or any portion of it, located in a designated agricultural district certified pursuant to Agriculture and Markets Law, Article 25-AA, Section 303 and 304?  Yes  No  
 If Yes, provide county plus district name/number: WAYN001

b. Are agricultural lands consisting of highly productive soils present?  Yes  No  
 i. If Yes: acreage(s) on project site? \_\_\_\_\_  
 ii. Source(s) of soil rating(s): \_\_\_\_\_

c. Does the project site contain all or part of, or is it substantially contiguous to, a registered National Natural Landmark?  Yes  No  
 If Yes:  
 i. Nature of the natural landmark:  Biological Community  Geological Feature  
 ii. Provide brief description of landmark, including values behind designation and approximate size/extent: \_\_\_\_\_

d. Is the project site located in or does it adjoin a state listed Critical Environmental Area?  Yes  No  
 If Yes:  
 i. CEA name: \_\_\_\_\_  
 ii. Basis for designation: \_\_\_\_\_  
 iii. Designating agency and date: \_\_\_\_\_



e. Does the project site contain, or is it substantially contiguous to, a building, archaeological site, or district which is listed on the National or State Register of Historic Places, or that has been determined by the Commissioner of the NYS Office of Parks, Recreation and Historic Preservation to be eligible for listing on the State Register of Historic Places?  Yes  No

If Yes:

i. Nature of historic/archaeological resource:  Archaeological Site  Historic Building or District

ii. Name: New York State Barge Canal Historic District

iii. Brief description of attributes on which listing is based:  
Erie Canal borders site parcel to the south

---

f. Is the project site, or any portion of it, located in or adjacent to an area designated as sensitive for archaeological sites on the NY State Historic Preservation Office (SHPO) archaeological site inventory?  Yes  No

---

g. Have additional archaeological or historic site(s) or resources been identified on the project site?  Yes  No

If Yes:

i. Describe possible resource(s): \_\_\_\_\_

ii. Basis for identification: \_\_\_\_\_

---

h. Is the project site within five miles of any officially designated and publicly accessible federal, state, or local scenic or aesthetic resource?  Yes  No

If Yes:

i. Identify resource: Erie Canal

ii. Nature of, or basis for, designation (e.g., established highway overlook, state or local park, state historic trail or scenic byway, etc.): \_\_\_\_\_

iii. Distance between project and resource: \_\_\_\_\_ <1 miles.

---

i. Is the project site located within a designated river corridor under the Wild, Scenic and Recreational Rivers Program 6 NYCRR 666?  Yes  No

If Yes:

i. Identify the name of the river and its designation: \_\_\_\_\_

ii. Is the activity consistent with development restrictions contained in 6NYCRR Part 666?  Yes  No

**F. Additional Information**


Attach any additional information which may be needed to clarify your project.

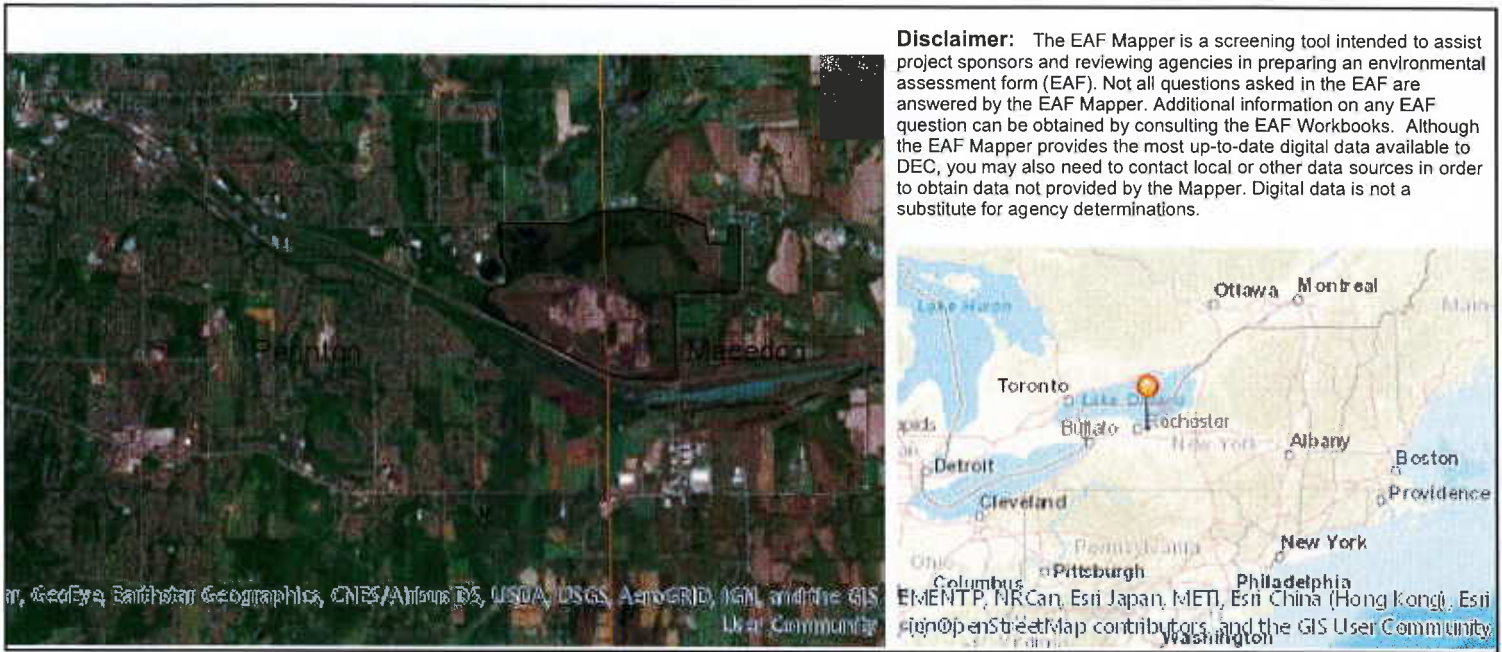
If you have identified any adverse impacts which could be associated with your proposal, please describe those impacts plus any measures which you propose to avoid or minimize them.

**G. Verification**

I certify that the information provided is true to the best of my knowledge.

Applicant/Sponsor Name Jeffrey Richardson Date 5/28/2021

Signature  Title Senior District Manager



B.i.i [Coastal or Waterfront Area]	No
B.i.ii [Local Waterfront Revitalization Area]	No
C.2.b. [Special Planning District]	Yes - Digital mapping data are not available for all Special Planning Districts. Refer to EAF Workbook.
C.2.b. [Special Planning District - Name]	Remediation Sites:828033, Remediation Sites:828008, Remediation Sites:828014, NYS Heritage Areas:West Erie Canal Corridor
E.1.h [DEC Spills or Remediation Site - Potential Contamination History]	Yes - Digital mapping data for Spills Incidents are not available for this location. Refer to EAF Workbook.
E.1.h.i [DEC Spills or Remediation Site - Listed]	Yes
E.1.h.i [DEC Spills or Remediation Site - Environmental Site Remediation Database]	Yes
E.1.h.i [DEC Spills or Remediation Site - DEC ID Number]	828033, 828008, 828014
E.1.h.iii [Within 2,000' of DEC Remediation Site]	Yes
E.1.h.iii [Within 2,000' of DEC Remediation Site - DEC ID]	828033, 828008, 828014
E.2.g [Unique Geologic Features]	No
E.2.h.i [Surface Water Features]	Yes
E.2.h.ii [Surface Water Features]	Yes
E.2.h.iii [Surface Water Features]	Yes - Digital mapping information on local and federal wetlands and waterbodies is known to be incomplete. Refer to EAF Workbook.
E.2.h.iv [Surface Water Features - Stream Name]	846-76, 898-155
E.2.h.iv [Surface Water Features - Stream Classification]	B, C

Lake/Pond Name]	
E.2.h.iv [Surface Water Features - Lake/Pond Classification]	<b>B</b>
E.2.h.iv [Surface Water Features - Wetlands Name]	Federal Waters, NYS Wetland
E.2.h.iv [Surface Water Features - Wetlands Size]	NYS Wetland (in acres):214.2, NYS Wetland (in acres):31.2, NYS Wetland (in acres):60.6, NYS Wetland (in acres):35.0, NYS Wetland (in acres):40.5
E.2.h.iv [Surface Water Features - DEC Wetlands Number]	PR-1, PR-23, MA-12, MA-15
E.2.h.v [Impaired Water Bodies]	Yes
E.2.h.v [Impaired Water Bodies - Name and Basis for Listing]	Name - Pollutants - Uses:Thomas Creek/White Brook and tribs – Nutrients – Recreation;Public Bathing;Aquatic Life
E.2.i. [Floodway]	Digital mapping data are not available or are incomplete. Refer to EAF Workbook.
E.2.j. [100 Year Floodplain]	Yes
E.2.k. [500 Year Floodplain]	Digital mapping data are not available or are incomplete. Refer to EAF Workbook.
E.2.l. [Aquifers]	Yes
E.2.l. [Aquifer Names]	Principal Aquifer, Primary Aquifer
E.2.n. [Natural Communities]	No
E.2.o. [Endangered or Threatened Species]	Yes
E.2.o. [Endangered or Threatened Species - Name]	Pied-billed Grebe
E.2.p. [Rare Plants or Animals]	No
E.3.a. [Agricultural District]	Yes
E.3.a. [Agricultural District]	WAYN001
E.3.c. [National Natural Landmark]	No
E.3.d [Critical Environmental Area]	No
E.3.e. [National or State Register of Historic Places or State Eligible Sites]	Yes - Digital mapping data for archaeological site boundaries are not available. Refer to EAF Workbook.
E.3.e.ii [National or State Register of Historic Places or State Eligible Sites - Name]	New York State Barge Canal Historic District
E.3.f. [Archeological Sites]	No
E.3.i. [Designated River Corridor]	No

**Full Environmental Assessment Form**  
**Part 2 - Identification of Potential Project Impacts**

Agency Use Only [If applicable]  
 Project : \_\_\_\_\_  
 Date : \_\_\_\_\_

**Part 2 is to be completed by the lead agency.** Part 2 is designed to help the lead agency inventory all potential resources that could be affected by a proposed project or action. We recognize that the lead agency's reviewer(s) will not necessarily be environmental professionals. So, the questions are designed to walk a reviewer through the assessment process by providing a series of questions that can be answered using the information found in Part 1. To further assist the lead agency in completing Part 2, the form identifies the most relevant questions in Part 1 that will provide the information needed to answer the Part 2 question. When Part 2 is completed, the lead agency will have identified the relevant environmental areas that may be impacted by the proposed activity.

If the lead agency is a state agency **and** the action is in any Coastal Area, complete the Coastal Assessment Form before proceeding with this assessment.

High Acres Landfill & Recycling Center - Special Use Permit Renewal: No changes to existing permit are proposed.

**Tips for completing Part 2:**

- Review all of the information provided in Part 1.
- Review any application, maps, supporting materials and the Full EAF Workbook.
- Answer each of the 18 questions in Part 2.
- If you answer "Yes" to a numbered question, please complete all the questions that follow in that section.
- If you answer "No" to a numbered question, move on to the next numbered question.
- Check appropriate column to indicate the anticipated size of the impact.
- Proposed projects that would exceed a numeric threshold contained in a question should result in the reviewing agency checking the box "Moderate to large impact may occur."
- The reviewer is not expected to be an expert in environmental analysis.
- If you are not sure or undecided about the size of an impact, it may help to review the sub-questions for the general question and consult the workbook.
- When answering a question consider all components of the proposed activity, that is, the "whole action".
- Consider the possibility for long-term and cumulative impacts as well as direct impacts.
- Answer the question in a reasonable manner considering the scale and context of the project.

<b>1. Impact on Land</b>			
Proposed action may involve construction on, or physical alteration of, the land surface of the proposed site. (See Part 1. D.1)		<input checked="" type="checkbox"/> NO	<input type="checkbox"/> YES
<i>If "Yes", answer questions a - j. If "No", move on to Section 2.</i>			
	Relevant Part I Question(s)	No, or small impact may occur	Moderate to large impact may occur
a. The proposed action may involve construction on land where depth to water table is less than 3 feet.	E2d	<input type="checkbox"/>	<input type="checkbox"/>
b. The proposed action may involve construction on slopes of 15% or greater.	E2f	<input type="checkbox"/>	<input type="checkbox"/>
c. The proposed action may involve construction on land where bedrock is exposed, or generally within 5 feet of existing ground surface.	E2a	<input type="checkbox"/>	<input type="checkbox"/>
d. The proposed action may involve the excavation and removal of more than 1,000 tons of natural material.	D2a	<input type="checkbox"/>	<input type="checkbox"/>
e. The proposed action may involve construction that continues for more than one year or in multiple phases.	D1e	<input type="checkbox"/>	<input type="checkbox"/>
f. The proposed action may result in increased erosion, whether from physical disturbance or vegetation removal (including from treatment by herbicides).	D2e, D2q	<input type="checkbox"/>	<input type="checkbox"/>
g. The proposed action is, or may be, located within a Coastal Erosion hazard area.	B1i	<input type="checkbox"/>	<input type="checkbox"/>
h. Other impacts: _____		<input type="checkbox"/>	<input type="checkbox"/>

**2. Impact on Geological Features**

The proposed action may result in the modification or destruction of, or inhibit access to, any unique or unusual land forms on the site (e.g., cliffs, dunes, minerals, fossils, caves). (See Part 1. E.2.g)

NO

YES

*If "Yes", answer questions a - c. If "No", move on to Section 3.*

	Relevant Part I Question(s)	No, or small impact may occur	Moderate to large impact may occur
a. Identify the specific land form(s) attached: _____ _____	E2g	<input type="checkbox"/>	<input type="checkbox"/>
b. The proposed action may affect or is adjacent to a geological feature listed as a registered National Natural Landmark. Specific feature: _____	E3c	<input type="checkbox"/>	<input type="checkbox"/>
c. Other impacts: _____ _____		<input type="checkbox"/>	<input type="checkbox"/>

**3. Impacts on Surface Water**

The proposed action may affect one or more wetlands or other surface water bodies (e.g., streams, rivers, ponds or lakes). (See Part 1. D.2, E.2.h)

NO

YES

*If "Yes", answer questions a - l. If "No", move on to Section 4.*

	Relevant Part I Question(s)	No, or small impact may occur	Moderate to large impact may occur
a. The proposed action may create a new water body.	D2b, D1h	<input type="checkbox"/>	<input type="checkbox"/>
b. The proposed action may result in an increase or decrease of over 10% or more than a 10 acre increase or decrease in the surface area of any body of water.	D2b	<input type="checkbox"/>	<input type="checkbox"/>
c. The proposed action may involve dredging more than 100 cubic yards of material from a wetland or water body.	D2a	<input type="checkbox"/>	<input type="checkbox"/>
d. The proposed action may involve construction within or adjoining a freshwater or tidal wetland, or in the bed or banks of any other water body.	E2h	<input type="checkbox"/>	<input type="checkbox"/>
e. The proposed action may create turbidity in a waterbody, either from upland erosion, runoff or by disturbing bottom sediments.	D2a, D2h	<input type="checkbox"/>	<input type="checkbox"/>
f. The proposed action may include construction of one or more intake(s) for withdrawal of water from surface water.	D2c	<input type="checkbox"/>	<input type="checkbox"/>
g. The proposed action may include construction of one or more outfall(s) for discharge of wastewater to surface water(s).	D2d	<input type="checkbox"/>	<input type="checkbox"/>
h. The proposed action may cause soil erosion, or otherwise create a source of stormwater discharge that may lead to siltation or other degradation of receiving water bodies.	D2e	<input type="checkbox"/>	<input type="checkbox"/>
i. The proposed action may affect the water quality of any water bodies within or downstream of the site of the proposed action.	E2h	<input type="checkbox"/>	<input type="checkbox"/>
j. The proposed action may involve the application of pesticides or herbicides in or around any water body.	D2q, E2h	<input type="checkbox"/>	<input type="checkbox"/>
k. The proposed action may require the construction of new, or expansion of existing, wastewater treatment facilities.	D1a, D2d	<input type="checkbox"/>	<input type="checkbox"/>

I. Other impacts: _____ _____		<input type="checkbox"/>	<input type="checkbox"/>
----------------------------------	--	--------------------------	--------------------------

**4. Impact on groundwater**

The proposed action may result in new or additional use of ground water, or may have the potential to introduce contaminants to ground water or an aquifer.

NO

YES

(See Part 1. D.2.a, D.2.c, D.2.d, D.2.p, D.2.q, D.2.t)

*If "Yes", answer questions a - h. If "No", move on to Section 5.*

	Relevant Part I Question(s)	No, or small impact may occur	Moderate to large impact may occur
a. The proposed action may require new water supply wells, or create additional demand on supplies from existing water supply wells.	D2c	<input type="checkbox"/>	<input type="checkbox"/>
b. Water supply demand from the proposed action may exceed safe and sustainable withdrawal capacity rate of the local supply or aquifer. Cite Source: _____	D2c	<input type="checkbox"/>	<input type="checkbox"/>
c. The proposed action may allow or result in residential uses in areas without water and sewer services.	D1a, D2c	<input type="checkbox"/>	<input type="checkbox"/>
d. The proposed action may include or require wastewater discharged to groundwater.	D2d, E2l	<input type="checkbox"/>	<input type="checkbox"/>
e. The proposed action may result in the construction of water supply wells in locations where groundwater is, or is suspected to be, contaminated.	D2c, E1f, E1g, E1h	<input type="checkbox"/>	<input type="checkbox"/>
f. The proposed action may require the bulk storage of petroleum or chemical products over ground water or an aquifer.	D2p, E2l	<input type="checkbox"/>	<input type="checkbox"/>
g. The proposed action may involve the commercial application of pesticides within 100 feet of potable drinking water or irrigation sources.	E2h, D2q, E2l, D2c	<input type="checkbox"/>	<input type="checkbox"/>
h. Other impacts: _____ _____		<input type="checkbox"/>	<input type="checkbox"/>

**5. Impact on Flooding**

The proposed action may result in development on lands subject to flooding.

NO

YES

(See Part 1. E.2)

*If "Yes", answer questions a - g. If "No", move on to Section 6.*

	Relevant Part I Question(s)	No, or small impact may occur	Moderate to large impact may occur
a. The proposed action may result in development in a designated floodway.	E2i	<input type="checkbox"/>	<input type="checkbox"/>
b. The proposed action may result in development within a 100 year floodplain.	E2j	<input type="checkbox"/>	<input type="checkbox"/>
c. The proposed action may result in development within a 500 year floodplain.	E2k	<input type="checkbox"/>	<input type="checkbox"/>
d. The proposed action may result in, or require, modification of existing drainage patterns.	D2b, D2e	<input type="checkbox"/>	<input type="checkbox"/>
e. The proposed action may change flood water flows that contribute to flooding.	D2b, E2i, E2j, E2k	<input type="checkbox"/>	<input type="checkbox"/>
f. If there is a dam located on the site of the proposed action, is the dam in need of repair, or upgrade?	E1e	<input type="checkbox"/>	<input type="checkbox"/>

g. Other impacts: _____ _____		<input type="checkbox"/>	<input type="checkbox"/>
----------------------------------	--	--------------------------	--------------------------

**6. Impacts on Air**

The proposed action may include a state regulated air emission source.  
(See Part 1. D.2.f., D.2.h, D.2.g)

NO

YES

*If "Yes", answer questions a - f. If "No", move on to Section 7.*

	Relevant Part I Question(s)	No, or small impact may occur	Moderate to large impact may occur
a. If the proposed action requires federal or state air emission permits, the action may also emit one or more greenhouse gases at or above the following levels: i. More than 1000 tons/year of carbon dioxide (CO <sub>2</sub> ) ii. More than 3.5 tons/year of nitrous oxide (N <sub>2</sub> O) iii. More than 1000 tons/year of carbon equivalent of perfluorocarbons (PFCs) iv. More than .045 tons/year of sulfur hexafluoride (SF <sub>6</sub> ) v. More than 1000 tons/year of carbon dioxide equivalent of hydrochloroflourocarbons (HFCs) emissions vi. 43 tons/year or more of methane	D2g D2g D2g D2g D2g D2h	<input type="checkbox"/> <input type="checkbox"/> <input type="checkbox"/> <input type="checkbox"/> <input type="checkbox"/> <input type="checkbox"/>	<input type="checkbox"/> <input type="checkbox"/> <input type="checkbox"/> <input type="checkbox"/> <input type="checkbox"/> <input type="checkbox"/>
b. The proposed action may generate 10 tons/year or more of any one designated hazardous air pollutant, or 25 tons/year or more of any combination of such hazardous air pollutants.	D2g	<input type="checkbox"/>	<input type="checkbox"/>
c. The proposed action may require a state air registration, or may produce an emissions rate of total contaminants that may exceed 5 lbs. per hour, or may include a heat source capable of producing more than 10 million BTU's per hour.	D2f, D2g	<input type="checkbox"/>	<input type="checkbox"/>
d. The proposed action may reach 50% of any of the thresholds in "a" through "c", above.	D2g	<input type="checkbox"/>	<input type="checkbox"/>
e. The proposed action may result in the combustion or thermal treatment of more than 1 ton of refuse per hour.	D2s	<input type="checkbox"/>	<input type="checkbox"/>
f. Other impacts: _____ _____		<input type="checkbox"/>	<input type="checkbox"/>

**7. Impact on Plants and Animals**

The proposed action may result in a loss of flora or fauna. (See Part 1. E.2. m.-q.)

NO

YES

*If "Yes", answer questions a - j. If "No", move on to Section 8.*

	Relevant Part I Question(s)	No, or small impact may occur	Moderate to large impact may occur
a. The proposed action may cause reduction in population or loss of individuals of any threatened or endangered species, as listed by New York State or the Federal government, that use the site, or are found on, over, or near the site.	E2o	<input type="checkbox"/>	<input type="checkbox"/>
b. The proposed action may result in a reduction or degradation of any habitat used by any rare, threatened or endangered species, as listed by New York State or the federal government.	E2o	<input type="checkbox"/>	<input type="checkbox"/>
c. The proposed action may cause reduction in population, or loss of individuals, of any species of special concern or conservation need, as listed by New York State or the Federal government, that use the site, or are found on, over, or near the site.	E2p	<input type="checkbox"/>	<input type="checkbox"/>
d. The proposed action may result in a reduction or degradation of any habitat used by any species of special concern and conservation need, as listed by New York State or the Federal government.	E2p	<input type="checkbox"/>	<input type="checkbox"/>

e. The proposed action may diminish the capacity of a registered National Natural Landmark to support the biological community it was established to protect.	E3c	<input type="checkbox"/>	<input type="checkbox"/>
f. The proposed action may result in the removal of, or ground disturbance in, any portion of a designated significant natural community. Source: _____	E2n	<input type="checkbox"/>	<input type="checkbox"/>
g. The proposed action may substantially interfere with nesting/breeding, foraging, or over-wintering habitat for the predominant species that occupy or use the project site.	E2m	<input type="checkbox"/>	<input type="checkbox"/>
h. The proposed action requires the conversion of more than 10 acres of forest, grassland or any other regionally or locally important habitat. Habitat type & information source: _____	E1b	<input type="checkbox"/>	<input type="checkbox"/>
i. Proposed action (commercial, industrial or recreational projects, only) involves use of herbicides or pesticides.	D2q	<input type="checkbox"/>	<input type="checkbox"/>
j. Other impacts: _____		<input type="checkbox"/>	<input type="checkbox"/>

**8. Impact on Agricultural Resources**

The proposed action may impact agricultural resources. (See Part 1. E.3.a. and b.)

NO

YES

*If "Yes", answer questions a - h. If "No", move on to Section 9.*

	Relevant Part I Question(s)	No, or small impact may occur	Moderate to large impact may occur
a. The proposed action may impact soil classified within soil group 1 through 4 of the NYS Land Classification System.	E2c, E3b	<input type="checkbox"/>	<input type="checkbox"/>
b. The proposed action may sever, cross or otherwise limit access to agricultural land (includes cropland, hayfields, pasture, vineyard, orchard, etc).	E1a, E1b	<input type="checkbox"/>	<input type="checkbox"/>
c. The proposed action may result in the excavation or compaction of the soil profile of active agricultural land.	E3b	<input type="checkbox"/>	<input type="checkbox"/>
d. The proposed action may irreversibly convert agricultural land to non-agricultural uses, either more than 2.5 acres if located in an Agricultural District, or more than 10 acres if not within an Agricultural District.	E1b, E3a	<input type="checkbox"/>	<input type="checkbox"/>
e. The proposed action may disrupt or prevent installation of an agricultural land management system.	E1 a, E1b	<input type="checkbox"/>	<input type="checkbox"/>
f. The proposed action may result, directly or indirectly, in increased development potential or pressure on farmland.	C2c, C3, D2c, D2d	<input type="checkbox"/>	<input type="checkbox"/>
g. The proposed project is not consistent with the adopted municipal Farmland Protection Plan.	C2c	<input type="checkbox"/>	<input type="checkbox"/>
h. Other impacts: _____		<input type="checkbox"/>	<input type="checkbox"/>



<b>9. Impact on Aesthetic Resources</b> The land use of the proposed action are obviously different from, or are in sharp contrast to, current land use patterns between the proposed project and a scenic or aesthetic resource. (Part 1. E.1.a, E.1.b, E.3.h.) <i>If "Yes", answer questions a - g. If "No", go to Section 10.</i>			
		<input checked="" type="checkbox"/> NO	<input type="checkbox"/> YES
	<b>Relevant Part I Question(s)</b>	<b>No, or small impact may occur</b>	<b>Moderate to large impact may occur</b>
a.	Proposed action may be visible from any officially designated federal, state, or local scenic or aesthetic resource.	<input type="checkbox"/>	<input type="checkbox"/>
b.	The proposed action may result in the obstruction, elimination or significant screening of one or more officially designated scenic views.	<input type="checkbox"/>	<input type="checkbox"/>
c.	The proposed action may be visible from publicly accessible vantage points: i. Seasonally (e.g., screened by summer foliage, but visible during other seasons) ii. Year round	<input type="checkbox"/> <input type="checkbox"/>	<input type="checkbox"/> <input type="checkbox"/>
d.	The situation or activity in which viewers are engaged while viewing the proposed action is: i. Routine travel by residents, including travel to and from work ii. Recreational or tourism based activities	<input type="checkbox"/> <input type="checkbox"/>	<input type="checkbox"/> <input type="checkbox"/>
e.	The proposed action may cause a diminishment of the public enjoyment and appreciation of the designated aesthetic resource.	<input type="checkbox"/>	<input type="checkbox"/>
f.	There are similar projects visible within the following distance of the proposed project: 0-1/2 mile 1/2 -3 mile 3-5 mile 5+ mile	<input type="checkbox"/>	<input type="checkbox"/>
g.	Other impacts: _____ _____	<input type="checkbox"/>	<input type="checkbox"/>

<b>10. Impact on Historic and Archeological Resources</b> The proposed action may occur in or adjacent to a historic or archaeological resource. (Part 1. E.3.e, f. and g.) <i>If "Yes", answer questions a - e. If "No", go to Section 11.</i>			
		<input checked="" type="checkbox"/> NO	<input type="checkbox"/> YES
	<b>Relevant Part I Question(s)</b>	<b>No, or small impact may occur</b>	<b>Moderate to large impact may occur</b>
a.	The proposed action may occur wholly or partially within, or substantially contiguous to, any buildings, archaeological site or district which is listed on the National or State Register of Historical Places, or that has been determined by the Commissioner of the NYS Office of Parks, Recreation and Historic Preservation to be eligible for listing on the State Register of Historic Places.	<input type="checkbox"/>	<input type="checkbox"/>
b.	The proposed action may occur wholly or partially within, or substantially contiguous to, an area designated as sensitive for archaeological sites on the NY State Historic Preservation Office (SHPO) archaeological site inventory.	<input type="checkbox"/>	<input type="checkbox"/>
c.	The proposed action may occur wholly or partially within, or substantially contiguous to, an archaeological site not included on the NY SHPO inventory. Source: _____	<input type="checkbox"/>	<input type="checkbox"/>

d. Other impacts: _____ _____		<input type="checkbox"/>	<input type="checkbox"/>
e. If any of the above (a-d) are answered "Moderate to large impact may occur", continue with the following questions to help support conclusions in Part 3:			
i. The proposed action may result in the destruction or alteration of all or part of the site or property.	E3e, E3g, E3f	<input type="checkbox"/>	<input type="checkbox"/>
ii. The proposed action may result in the alteration of the property's setting or integrity.	E3e, E3f, E3g, E1a, E1b	<input type="checkbox"/>	<input type="checkbox"/>
iii. The proposed action may result in the introduction of visual elements which are out of character with the site or property, or may alter its setting.	E3e, E3f, E3g, E3h, C2, C3	<input type="checkbox"/>	<input type="checkbox"/>

### 11. Impact on Open Space and Recreation

The proposed action may result in a loss of recreational opportunities or a reduction of an open space resource as designated in any adopted municipal open space plan.

(See Part 1. C.2.c, E.1.c., E.2.q.)

*If "Yes", answer questions a - e. If "No", go to Section 12.*

NO

YES

	Relevant Part I Question(s)	No, or small impact may occur	Moderate to large impact may occur
a. The proposed action may result in an impairment of natural functions, or "ecosystem services", provided by an undeveloped area, including but not limited to stormwater storage, nutrient cycling, wildlife habitat.	D2e, E1b E2h, E2m, E2o, E2n, E2p	<input type="checkbox"/>	<input type="checkbox"/>
b. The proposed action may result in the loss of a current or future recreational resource.	C2a, E1c, C2c, E2q	<input type="checkbox"/>	<input type="checkbox"/>
c. The proposed action may eliminate open space or recreational resource in an area with few such resources.	C2a, C2c E1c, E2q	<input type="checkbox"/>	<input type="checkbox"/>
d. The proposed action may result in loss of an area now used informally by the community as an open space resource.	C2c, E1c	<input type="checkbox"/>	<input type="checkbox"/>
e. Other impacts: _____ _____		<input type="checkbox"/>	<input type="checkbox"/>

### 12. Impact on Critical Environmental Areas

The proposed action may be located within or adjacent to a critical environmental area (CEA). (See Part 1. E.3.d)

*If "Yes", answer questions a - c. If "No", go to Section 13.*

NO

YES

	Relevant Part I Question(s)	No, or small impact may occur	Moderate to large impact may occur
a. The proposed action may result in a reduction in the quantity of the resource or characteristic which was the basis for designation of the CEA.	E3d	<input type="checkbox"/>	<input type="checkbox"/>
b. The proposed action may result in a reduction in the quality of the resource or characteristic which was the basis for designation of the CEA.	E3d	<input type="checkbox"/>	<input type="checkbox"/>
c. Other impacts: _____ _____		<input type="checkbox"/>	<input type="checkbox"/>

**13. Impact on Transportation**

The proposed action may result in a change to existing transportation systems.

 NO YES

(See Part 1. D.2.j)

*If "Yes", answer questions a - f. If "No", go to Section 14.*

	Relevant Part I Question(s)	No, or small impact may occur	Moderate to large impact may occur
a. Projected traffic increase may exceed capacity of existing road network.	D2j	<input type="checkbox"/>	<input type="checkbox"/>
b. The proposed action may result in the construction of paved parking area for 500 or more vehicles.	D2j	<input type="checkbox"/>	<input type="checkbox"/>
c. The proposed action will degrade existing transit access.	D2j	<input type="checkbox"/>	<input type="checkbox"/>
d. The proposed action will degrade existing pedestrian or bicycle accommodations.	D2j	<input type="checkbox"/>	<input type="checkbox"/>
e. The proposed action may alter the present pattern of movement of people or goods.	D2j	<input type="checkbox"/>	<input type="checkbox"/>
f. Other impacts: _____		<input type="checkbox"/>	<input type="checkbox"/>

**14. Impact on Energy**

The proposed action may cause an increase in the use of any form of energy.

 NO YES

(See Part 1. D.2.k)

*If "Yes", answer questions a - e. If "No", go to Section 15.*

	Relevant Part I Question(s)	No, or small impact may occur	Moderate to large impact may occur
a. The proposed action will require a new, or an upgrade to an existing, substation.	D2k	<input type="checkbox"/>	<input type="checkbox"/>
b. The proposed action will require the creation or extension of an energy transmission or supply system to serve more than 50 single or two-family residences or to serve a commercial or industrial use.	D1f, D1q, D2k	<input type="checkbox"/>	<input type="checkbox"/>
c. The proposed action may utilize more than 2,500 MWhrs per year of electricity.	D2k	<input type="checkbox"/>	<input type="checkbox"/>
d. The proposed action may involve heating and/or cooling of more than 100,000 square feet of building area when completed.	D1g	<input type="checkbox"/>	<input type="checkbox"/>
e. Other Impacts: _____			

**15. Impact on Noise, Odor, and Light**

The proposed action may result in an increase in noise, odors, or outdoor lighting.

 NO YES

(See Part 1. D.2.m., n., and o.)

*If "Yes", answer questions a - f. If "No", go to Section 16.*

	Relevant Part I Question(s)	No, or small impact may occur	Moderate to large impact may occur
a. The proposed action may produce sound above noise levels established by local regulation.	D2m	<input type="checkbox"/>	<input type="checkbox"/>
b. The proposed action may result in blasting within 1,500 feet of any residence, hospital, school, licensed day care center, or nursing home.	D2m, E1d	<input type="checkbox"/>	<input type="checkbox"/>
c. The proposed action may result in routine odors for more than one hour per day.	D2o	<input type="checkbox"/>	<input type="checkbox"/>

d. The proposed action may result in light shining onto adjoining properties.	D2n	<input type="checkbox"/>	<input type="checkbox"/>
e. The proposed action may result in lighting creating sky-glow brighter than existing area conditions.	D2n, E1a	<input type="checkbox"/>	<input type="checkbox"/>
f. Other impacts: _____ _____		<input type="checkbox"/>	<input type="checkbox"/>

**16. Impact on Human Health**

The proposed action may have an impact on human health from exposure to new or existing sources of contaminants. (See Part 1.D.2.q., E.1. d. f. g. and h.)  
*If "Yes", answer questions a - m. If "No", go to Section 17.*

NO

YES

	Relevant Part I Question(s)	No, or small impact may occur	Moderate to large impact may occur
a. The proposed action is located within 1500 feet of a school, hospital, licensed day care center, group home, nursing home or retirement community.	E1d	<input type="checkbox"/>	<input type="checkbox"/>
b. The site of the proposed action is currently undergoing remediation.	E1g, E1h	<input type="checkbox"/>	<input type="checkbox"/>
c. There is a completed emergency spill remediation, or a completed environmental site remediation on, or adjacent to, the site of the proposed action.	E1g, E1h	<input type="checkbox"/>	<input type="checkbox"/>
d. The site of the action is subject to an institutional control limiting the use of the property (e.g., easement or deed restriction).	E1g, E1h	<input type="checkbox"/>	<input type="checkbox"/>
e. The proposed action may affect institutional control measures that were put in place to ensure that the site remains protective of the environment and human health.	E1g, E1h	<input type="checkbox"/>	<input type="checkbox"/>
f. The proposed action has adequate control measures in place to ensure that future generation, treatment and/or disposal of hazardous wastes will be protective of the environment and human health.	D2t	<input type="checkbox"/>	<input type="checkbox"/>
g. The proposed action involves construction or modification of a solid waste management facility.	D2q, E1f	<input type="checkbox"/>	<input type="checkbox"/>
h. The proposed action may result in the unearthing of solid or hazardous waste.	D2q, E1f	<input type="checkbox"/>	<input type="checkbox"/>
i. The proposed action may result in an increase in the rate of disposal, or processing, of solid waste.	D2r, D2s	<input type="checkbox"/>	<input type="checkbox"/>
j. The proposed action may result in excavation or other disturbance within 2000 feet of a site used for the disposal of solid or hazardous waste.	E1f, E1g E1h	<input type="checkbox"/>	<input type="checkbox"/>
k. The proposed action may result in the migration of explosive gases from a landfill site to adjacent off site structures.	E1f, E1g	<input type="checkbox"/>	<input type="checkbox"/>
l. The proposed action may result in the release of contaminated leachate from the project site.	D2s, E1f, D2r	<input type="checkbox"/>	<input type="checkbox"/>
m. Other impacts: _____ _____			

**17. Consistency with Community Plans**

The proposed action is not consistent with adopted land use plans.  
 (See Part 1. C.1, C.2. and C.3.)  
 If "Yes", answer questions a - h. If "No", go to Section 18.

NO

YES

	Relevant Part I Question(s)	No, or small impact may occur	Moderate to large impact may occur
a. The proposed action's land use components may be different from, or in sharp contrast to, current surrounding land use pattern(s).	C2, C3, D1a E1a, E1b	<input type="checkbox"/>	<input type="checkbox"/>
b. The proposed action will cause the permanent population of the city, town or village in which the project is located to grow by more than 5%.	C2	<input type="checkbox"/>	<input type="checkbox"/>
c. The proposed action is inconsistent with local land use plans or zoning regulations.	C2, C2, C3	<input type="checkbox"/>	<input type="checkbox"/>
d. The proposed action is inconsistent with any County plans, or other regional land use plans.	C2, C2	<input type="checkbox"/>	<input type="checkbox"/>
e. The proposed action may cause a change in the density of development that is not supported by existing infrastructure or is distant from existing infrastructure.	C3, D1c, D1d, D1f, D1d, E1b	<input type="checkbox"/>	<input type="checkbox"/>
f. The proposed action is located in an area characterized by low density development that will require new or expanded public infrastructure.	C4, D2c, D2d D2j	<input type="checkbox"/>	<input type="checkbox"/>
g. The proposed action may induce secondary development impacts (e.g., residential or commercial development not included in the proposed action)	C2a	<input type="checkbox"/>	<input type="checkbox"/>
h. Other: _____ _____		<input type="checkbox"/>	<input type="checkbox"/>

**18. Consistency with Community Character**

The proposed project is inconsistent with the existing community character.  
 (See Part 1. C.2, C.3, D.2, E.3)  
 If "Yes", answer questions a - g. If "No", proceed to Part 3.

NO

YES

	Relevant Part I Question(s)	No, or small impact may occur	Moderate to large impact may occur
a. The proposed action may replace or eliminate existing facilities, structures, or areas of historic importance to the community.	E3e, E3f, E3g	<input type="checkbox"/>	<input type="checkbox"/>
b. The proposed action may create a demand for additional community services (e.g. schools, police and fire)	C4	<input type="checkbox"/>	<input type="checkbox"/>
c. The proposed action may displace affordable or low-income housing in an area where there is a shortage of such housing.	C2, C3, D1f D1g, E1a	<input type="checkbox"/>	<input type="checkbox"/>
d. The proposed action may interfere with the use or enjoyment of officially recognized or designated public resources.	C2, E3	<input type="checkbox"/>	<input type="checkbox"/>
e. The proposed action is inconsistent with the predominant architectural scale and character.	C2, C3	<input type="checkbox"/>	<input type="checkbox"/>
f. Proposed action is inconsistent with the character of the existing natural landscape.	C2, C3 E1a, E1b E2g, E2h	<input type="checkbox"/>	<input type="checkbox"/>
g. Other impacts: _____ _____		<input type="checkbox"/>	<input type="checkbox"/>

**Full Environmental Assessment Form**  
**Part 3 - Evaluation of the Magnitude and Importance of Project Impacts**  
**and**  
**Determination of Significance**

Part 3 provides the reasons in support of the determination of significance. The lead agency must complete Part 3 for every question in Part 2 where the impact has been identified as potentially moderate to large or where there is a need to explain why a particular element of the proposed action will not, or may, result in a significant adverse environmental impact.

Based on the analysis in Part 3, the lead agency must decide whether to require an environmental impact statement to further assess the proposed action or whether available information is sufficient for the lead agency to conclude that the proposed action will not have a significant adverse environmental impact. By completing the certification on the next page, the lead agency can complete its determination of significance.

**Reasons Supporting This Determination:**

To complete this section:

- Identify the impact based on the Part 2 responses and describe its magnitude. Magnitude considers factors such as severity, size or extent of an impact.
- Assess the importance of the impact. Importance relates to the geographic scope, duration, probability of the impact occurring, number of people affected by the impact and any additional environmental consequences if the impact were to occur.
- The assessment should take into consideration any design element or project changes.
- Repeat this process for each Part 2 question where the impact has been identified as potentially moderate to large or where there is a need to explain why a particular element of the proposed action will not, or may, result in a significant adverse environmental impact.
- Provide the reason(s) why the impact may, or will not, result in a significant adverse environmental impact
- For Conditional Negative Declarations identify the specific condition(s) imposed that will modify the proposed action so that no significant adverse environmental impacts will result.
- Attach additional sheets, as needed.

The Proposed Action is a Renewal of the existing Town of Perinton Special Use Permit for the High Acres Landfill & Recycling Center. There are no proposed changes to the current permit. SEQR was previously completed for the project with the completion of the 1993 FEIS, November 2000 SDEIS, January 2003 SFEIS, and the January 2007 FSEIS.

**Determination of Significance - Type 1 and Unlisted Actions**

SEQR Status:       Type 1                       Unlisted

Identify portions of EAF completed for this Project:     Part 1             Part 2             Part 3

Upon review of the information recorded on this EAF, as noted, plus this additional support information

and considering both the magnitude and importance of each identified potential impact, it is the conclusion of the  
Town of Perinton Zoning Board of Appeals \_\_\_\_\_ as lead agency that:

A. This project will result in no significant adverse impacts on the environment, and, therefore, an environmental impact statement need not be prepared. Accordingly, this negative declaration is issued.

B. Although this project could have a significant adverse impact on the environment, that impact will be avoided or substantially mitigated because of the following conditions which will be required by the lead agency:

There will, therefore, be no significant adverse impacts from the project as conditioned, and, therefore, this conditioned negative declaration is issued. A conditioned negative declaration may be used only for UNLISTED actions (see 6 NYCRR 617.7(d)).

C. This Project may result in one or more significant adverse impacts on the environment, and an environmental impact statement must be prepared to further assess the impact(s) and possible mitigation and to explore alternatives to avoid or reduce those impacts. Accordingly, this positive declaration is issued.

Name of Action: High Acres Landfill & Recycling Center - Western Expansion Landfill, and Parkway Expansion - Phase I, Phase II, and Phase III - SU

Name of Lead Agency: Town of Perinton Zoning Board of Appeals

Name of Responsible Officer in Lead Agency: Robin Ezell

Title of Responsible Officer: Chairperson

Signature of Responsible Officer in Lead Agency:

Date:

Signature of Preparer (if different from Responsible Officer)

Date:

**For Further Information:**

Contact Person:

Address:

Telephone Number:

E-mail:

**For Type 1 Actions and Conditioned Negative Declarations, a copy of this Notice is sent to:**

Chief Executive Officer of the political subdivision in which the action will be principally located (e.g., Town / City / Village of)

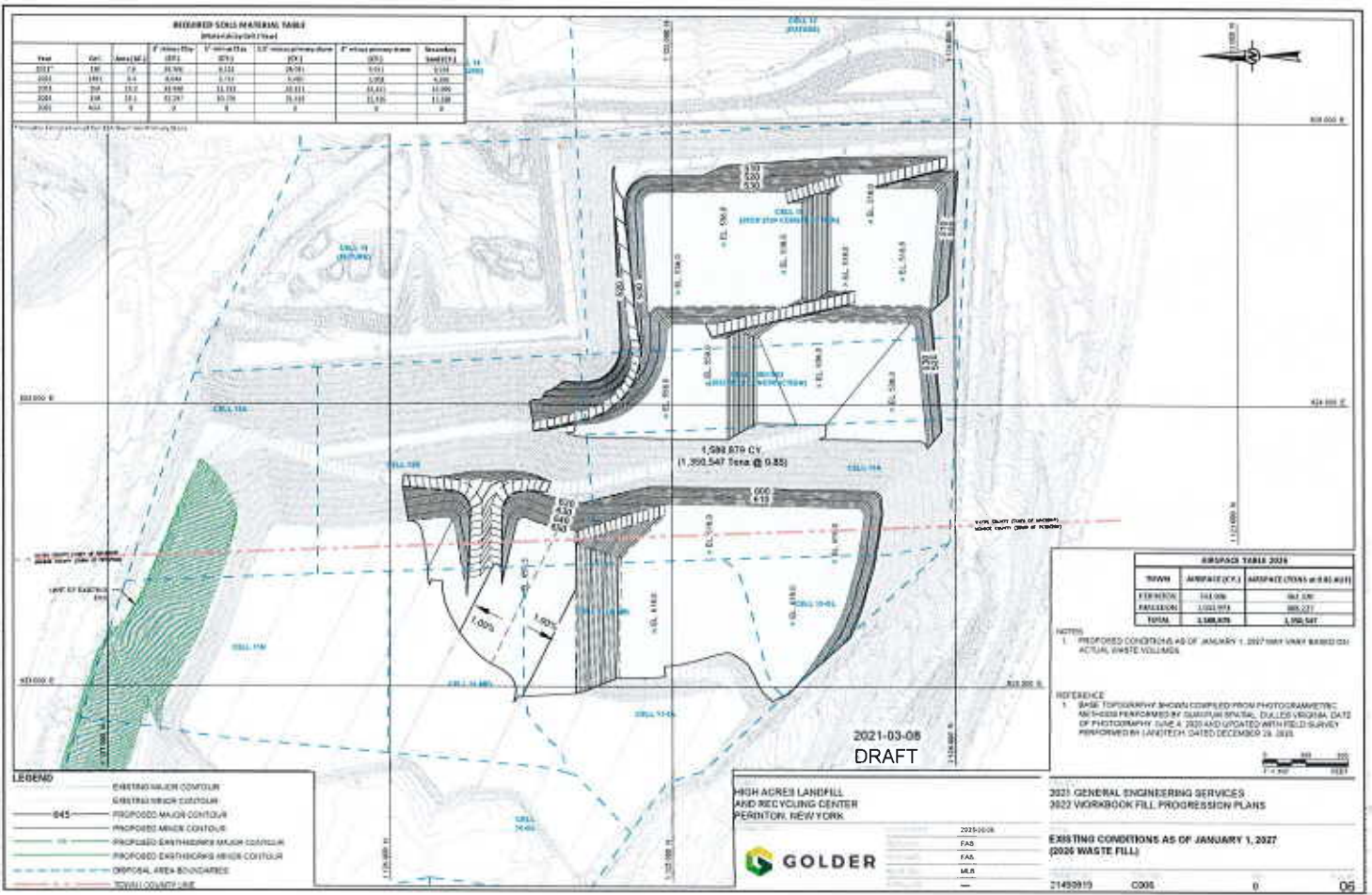
Other involved agencies (if any)

Applicant (if any)

Environmental Notice Bulletin: <http://www.dec.ny.gov/enb/enb.html>

Attachment 3  
Fill Plan - 2026





**REQUIRED SOIL MATERIAL TABLE**  
(MATERIALS BY CELL)

Year	Cell	Area (M <sup>2</sup> )	F <sub>1</sub> (mm) (%)	F <sub>2</sub> (mm) (%)	F <sub>4</sub> (mm) (%)	F <sub>20</sub> (mm) (%)	Standard Deviation
2017	10A	75	25.76	4.12	2.05	0.75	0.20
2018	10B	54	4.04	1.71	0.85	0.35	
2019	10C	137	10.98	11.03	20.11	16.41	11.89
2020	10D	183	12.29	10.78	19.81	11.85	11.89
2021	10E	9	0	0	0	0	0

**DISBURSE TABLE 2020**

Item	Amount (CY)	Amount (Tons @ 9.83)
PERMIT	141,000	1,384,000
LANDFILL	1,000,000	9,830,000
<b>TOTAL</b>	<b>1,141,000</b>	<b>11,214,000</b>

NOTES:  
1. PROPOSED CONDITIONS AS OF JANUARY 1, 2027 MAY VARY BASED ON ACTUAL WASTE VOLUMES.

REFERENCE:  
1. SHM TOPOGRAHY DATA COMPILED FROM PHOTOGRAMMETRIC ANALYSIS PERFORMED BY GOLDER SPITAL, DALLAS, TEXAS. DATE OF PHOTOGRAPHY: JUNE 4, 2020 AND UPDATED WITH FIELD SURVEY PERFORMED BY LARTECH DATED DECEMBER 28, 2021.

2021-03-08  
**DRAFT**

GOLDER  
HIGH ADRES LANDFILL AND RECYCLING CENTER  
PERDENTON, NEW YORK

2021-03-08  
FAD  
FAM  
MAR

EXISTING CONDITIONS AS OF JANUARY 1, 2027  
(2026 WASTE FILL)

21493919 0005 0 05

Attachment 4  
August 6, 2019 NYSDEC NOV Completion Letter

## NEW YORK STATE DEPARTMENT OF ENVIRONMENTAL CONSERVATION

Regional Director, Region 8

6274 East Avon-Lima Road, Avon, NY 14414-9516

P (585) 226-5366 | F (585) 226-9485

[www.dec.ny.gov](http://www.dec.ny.gov)

August 6, 2019

Mr. Jeffrey G. Richardson  
Sr. District Manager  
Waste Management of New York, LLC  
425 Perinton Parkway  
Fairport NY 14450

Dear Mr. Richardson:

This is in response to your letter dated July 12, 2019 regarding the extent to which the company has met the obligations contained in the February 2, 2018 Notice of Violation issued by this office and the terms of the February 12, 2018 letter from the Department to the Town of Perinton. DEC acknowledges that the specific measures contained in those two documents have been implemented, and those which are continuing obligations have been incorporated into the revised (and DEC approved) Operation and Maintenance Manual for the facility. Of course, meeting the terms of those two documents does not change the continuing obligation of the company to take all reasonable measures to minimize any negative impacts the operation of the facility may have on its neighbors.

I also want to take this opportunity to communicate to you my perspective on two measures taken since last year that in my opinion, separate from the work done to repair and improve the gas collection and control system to minimize fugitive gas from the landfill, have significantly contributed to the effort to minimize off site operational odors.

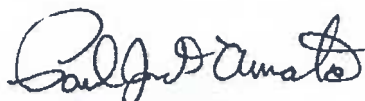
The first is the commitment to have a minimum of 18 months of cell capacity constructed at all times. When we first discussed the efficacy of this measure, it seemed clear that with the limited construction season in this part of the country, this requirement would enhance operational flexibility in terms of waste placement. Staff's observations are that it has been a useful tool in the company's effort to adjust to various weather or other conditions that could impact the operations or the facility's off-site impacts. We intend to keep that requirement in place for the long term for the High Acres facility, and strongly suggest that you consider its implementation at other facilities that are similarly subject to limited construction seasons.

2.

The second is the company's decision for 2019 to adjust the volume of waste brought in by rail. It is our observation that this has "smoothed out" the processing of rail cars at the facility in terms of the number of cars to be processed at any one time. This, in turn, has improved operations by having fewer difficult circumstances caused by any unexpected occurrences in the CSX transportation infrastructure or timing of deliveries. I am working under the assumption that the current rail waste practices will continue for 2020 and look forward to receipt of that commitment from the company.

Thank you for your attention to this matter.

Very truly yours,

A handwritten signature in black ink, appearing to read "Paul J. D'Amato". The signature is written in a cursive, flowing style.

Paul J. D'Amato  
Regional Director

Attachment 5  
Summary of Regulatory Criteria

# Landfill Operating Criteria

	Regulatory Requirements	High Acres
Monthly Well Monitoring	X	X
Quarterly Surface Scan (500 ppm) Action Level	X	X
Gas Collection Within 5 Years of Waste Placement	X	X
Vertical Wells	X	X
Horizontal Collection - 20 feet Vertical and 100 feet Horizontal	X	X
Gas Control Devices (Flares, Beneficial Reuse)	X	X
Odor Control Plan	X	X
Waste Identification and Screening	X	X
Dedicated Staff to Monitor Gas System	X	X
Monitoring for Off Site Fugitive Odors	X	X
Operating Soil Cover (5 inches)	X	X
12 inches of Intermediate Cover / Geomembrane Cover	X	X
Waste Screening to Control Odors	X	X
Dust Control Plan	X	X
8 Hour Landfill Operator Training	X	X
Limit Biosolids Acceptance to Less than 10%		X
Incorporate Odorous Materials into Waste and Limit Acceptance Times		X
Identify and Remove Odorous Waste Streams		X
Limit Size of Working Face		X
Strip Daily Cover Prior to New Waste Placement		X
Site Personnel Respond to Complaints		X
Perimeter Misting Systems		X
Working Face Misting Systems		X
Gas Well Dewatering (Limited)		X
Technicians on Call 24/7 to Respond to System Issues		X
Quarterly Surface Scans (200 ppm) - Town/NYSDEC Screening Level		X
Continuous Perimeter and Community H <sub>2</sub> S Monitoring (5 Fixed Locations)		X
Installation of Base Gas Collection Grid Prior to Waste Placement (200 feet x 200 feet)		X
Slip Wells Installed With Initial Waste Placement and Continuously Extended		X
Reverberation Limiter Installed at Flares		X
Automated Landfill Gas Well Dewatering System		X
Extensive Waste Characterization Study Performed with Town and DEC		X
Sulfur Containing Waste Removed from Site		X
Biosolids Acceptance Less Than 5%		X
Generator Visits to Recommend Additional Odor Treatment Methods		X
Neutralizer Applied to Waste at Intermodal Transfer Sites and POTW Prior to Shipment		X
Use of Granular Odor Control Neutralizer for Odor and Dust Control		X
Comprehensive Odor Control System Designed by Third-Party Engineering Firm		X
Reconfigured Fill Progression Plans to Move Operations Further Away from Residents		X
Constructing Larger Cells to Provide More Operational Flexibility (18 Months Rolling Capacity)		X
Limited Alternative Operating Cover and Supplement with Soil Cover		X
Pad-Foot Roller Used to Seal Soil Cover at End of Day		X
Working Face Foreman Signoff on Cover Conditions at End of Working Day		X
Purchase EPI Cover System as Daily Cover to Seal Working Face and Eliminate Soil Stripping (1.75 mil Film Membrane)		X
24/7 Hotline Established for Site in Conjunction with Town and DEC		X
Certified Odor Training Conducted for In-House, Third-Party, and Town Personnel		X
Third-Party Contractor Performs Routine Off-Site Monitoring Through Surrounding Neighborhoods		X
Hotline Complaints Investigated and Reported in Real Time to DEC, Site, and Town		X
Independent Expert Conducts Off-Site Odor Monitoring to Gauge Effectiveness of Site Improvements		X
Bi-Weekly Meetings Held with Town to Review Odor Complaints and Investigations		X

Attachment 6  
Perinton Conservation Board SUP Conditions

**High Acres Landfill Recycling Center  
Parkway Expansion Phase III  
Conditions**

**Conditions Resulting from the following: Perinton ZBA Special Use Permit; Perinton Planning Board  
Site Plan Approval or Town Board LDD SUP**

Number	Action Item (Condition)
1	As part of WMNY's annual report to the Conservation Board, WMNY to provide an update on the implementation of the landscaping plan including the success of the naturally occurring vegetation on and around the landfill, strategies to enhance the visual aspects of the landfill, and any changes to the landscaping plan concept.
2	As part of WMNY's annual report to the Conservation Board, WMNY to provide projected filling sequence and a projected schedule for applying both interim and final cover.
3	As part of WMNY's annual report to the Conservation Board, WMNY to provide acoustical monitoring results showing that noise levels emanating from the landfill do not exceed Part 360 standards.
4	WMNY to continue to inform the Town of Perinton of citizen odor notifications and WMNY's response, in a timely manner, and if applicable, including remedial mitigation measures. A summary of notifications for the year will be included in the annual report to the Conservation Board.
5	As part of WMNY's annual report to the Conservation Board, WMNY to provide the annual Wetland Mitigation Monitoring Reports summarizing the progress made in implementing the wetland mitigation plans.
6	WMNY shall store vehicles in such a manner so that they are not visible to the public and that they are not parked in the public viewshed.
7	WMNY is to meet with the Conservation Board, acting as an agent for the Town Board, Planning Board and Zoning Board of Appeals, on an annual basis to review and discuss the specified conditions. Following the meeting, the Conservation Board will prepare a summary report for the Town Board.
8	WMNY to continue to work with the Conservation Board and other community partners to provide the public with educational materials related to landfill operations and the High Acres Nature Area.
9	As part of WMNY's annual report to the Conservation Board, provide the most recent Closure and Post-Closure cost estimates submitted to the NYSDEC.
10	Phase III expansion will be covered with at least six inches of non-deleterious topsoil in conformance with the general storm water permit.





## TOWN OF PERINTON

1350 TURK HILL ROAD ■ FAIRPORT, NEW YORK 14450-8796  
(585) 223-0770 ■ Fax: (585) 223-3629 ■ www.perinton.org

2016 AUG - 1 PM 4: 05  
TOWN OF PERINTON

### ZONING BOARD OF APPEALS

Meeting Date: July 25, 2016

### SPECIAL PERMIT

Mr. Jeff Richardson  
Waste Management of New York, LLC  
425 Perinton Parkway  
Fairport, NY 14450

Dear Mr. Richardson:

Please be advised that the Town of Perinton Zoning Board of Appeals took the following action regarding the application for:

**Waste Management of New York, LLC ( WMNY), as owner of property located at 425 Perinton Parkway ( High Acres Landfill & Recycling Center) , requesting a renewal of Special Permit under 208-21 for the existing Western Expansion, Parkway Expansion Phase1 (Phase I), Parkway Expansion Phase 2 (Phase II), Parkway Expansion Phase 3 (Phase III). Said property being located in an Industrial District.**

The Zoning Board of Appeals considers this a Type 2 action under SEQR and no SEQR determination is required for this renewal as there have been no significant operational changes in Perinton since Waste Management's last permit renewal five years ago, and this action does not have a significant impact on the environment and is not any less protective of the environment.

Motion carries 5 – 0.

The Zoning Board of Appeals granted a renewal of Special Permit under 208-21 for a solid waste facility permit to Waste Management of New York, LLC (WMNY), owner of property located at 425 Perinton Parkway (High Acres Landfill & Recycling Center) ,for the existing Western Expansion, Parkway Expansion Phase1 (Phase I), Parkway Expansion Phase 2 (Phase II), Parkway Expansion Phase 3 (Phase III) with permit to run from 8/22/16 – 8/22/2021, for application received by the Town on 6/27/16 and addendum received by the Town on 7/22/16, based on the following findings:


1. Waste Management has a current Benefits Agreement with the Town which was entered into on December 31, 2013.
2. The Benefits Agreement with the Town limits the type of waste which may be accepted at the landfill.
3. Granting such permit is in the public interest to establish environmentally sound facilities to dispose of and treat solid waste.
4. Adequate plans have been presented to show that the landfill does not create a public hazard and that the landfill does not unduly interfere with the quiet enjoyment of adjacent properties; and that sufficient precautions have been taken to prevent fires or the creation and spread of smoke, odor, dust, fumes or noises liable to become a nuisance. Temporary cover is provided at the end of each day and revegetation has been appropriately provided.
5. Waste Management provides annual reports to the Town showing compliance with the conditions imposed for the Parkway Expansion Phase III and generating a dialogue about operations at the landfill.
6. The Conservation Board supports this application by memo to the Zoning Board of Appeals dated 7/22/16.
7. CED, Planning Board and DPW have no concerns.
8. There have been no changes in the operating conditions, hours of operation or the footprint.



Motion carries 5 – 0.

If you no longer wish to have this permit on the property, please notify the Town in writing that you have discontinued the use, and we will mark it null & void.

Dated: August 1, 2016

A handwritten signature in black ink, appearing to read "Lori L. Stid". The signature is written in a cursive style with a large initial "L" and a long, sweeping underline.

Lori L. Stid, Clerk  
Perinton Zoning Board of Appeals